



Zetland, NSW
1306/28 Zetland Avenue

3 BED **2** BATH **1** CAR 

Sophisticated Urban Living in 3 Bedroom Apartment with City & Park Views in 'The Frederick' by Mirvac

Found in one of Sydney's fastest growing residential precincts, The Frederick is perfectly situated amongst the nearly completed Drying Green parkland, Green Square Train Station, Green Square Library and Gunyama Aquatic and Recreation Centre. You will also find yourself within minutes of shops, schools, child care centres, restaurants, cafes and parklands. Residents will also enjoy exclusive access to world-class amenities such as a wellness studio and gym, business centre and sky lounge.?

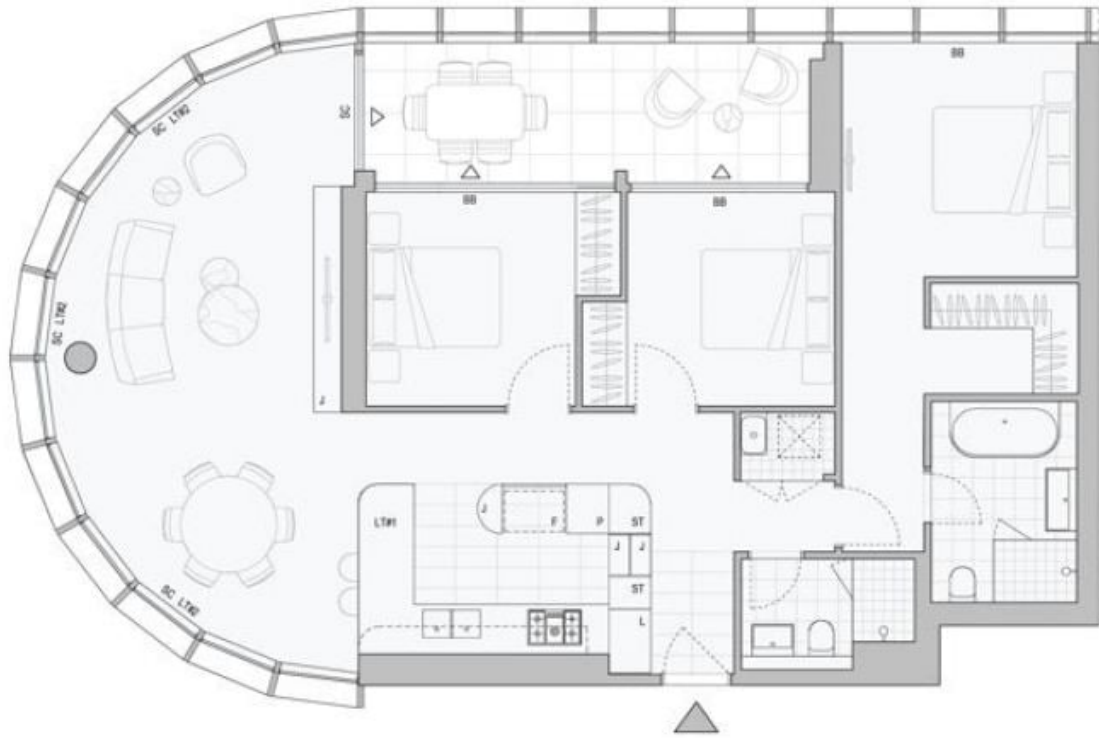
This 119sqm, 13th floor apartment features:

- Three well proportioned bedrooms with built-in wardrobes

Buyers Guide \$2,210,000

Contact: Emma Symonds
02 8588 8888
0412 660 011

Type: Apartment
Land: 119Square Metres
<https://www.resbymirvac.com>



Plans shown are only indicative of layout. Dimensions are approximate.

Zetland, NSW
1306/28 Zetland Avenue