



Glebe, NSW
618/159 Ross Street

1
BED

1
BATH



Chic 1 Bedroom + Study Apartment in Parkside 'Chevalier' Building, Harold Park

Welcome to Harold Park, Glebe's Secret Backyard.

In the charming enclave of Harold Park, you'll discover a picturesque parkside setting, just a leisurely stroll from Glebe Foreshore. Merely steps away, The Tramsheds retail precinct beckons, boasting delightful cafes, a boutique grocery store, renowned restaurants, and even a convenient medical centre. Plus, enjoy close proximity to the light rail, schools, and the city, all just a short distance away, ensuring convenience and connectivity at your fingertips.

This spacious 69sqm, 'Chevalier' apartment features:

\$850 per week | Deposit Taken

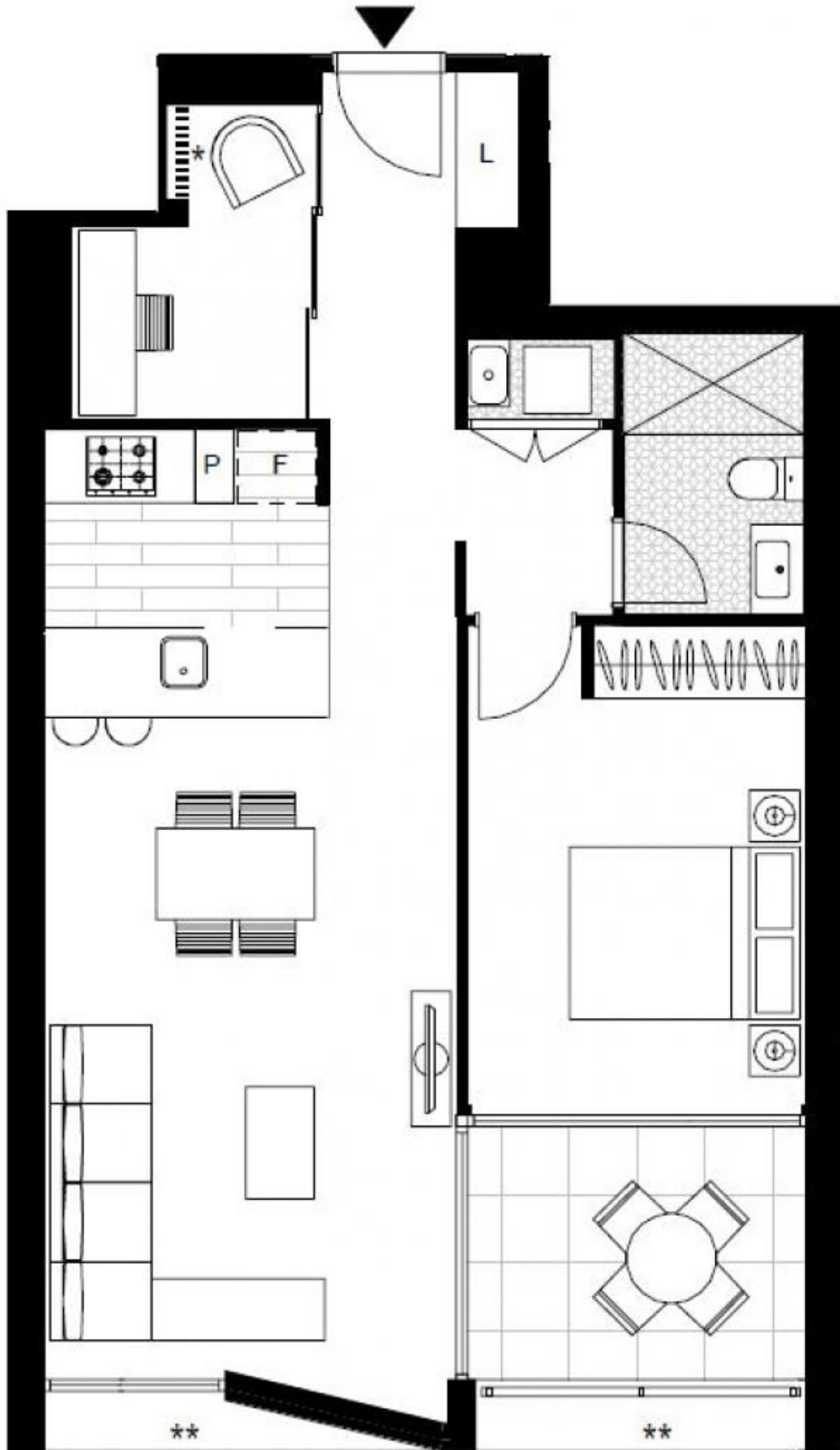
Contact: Naz Sabzpouri
02 8588 8888
0401 545 440

Type: Apartment

Date Available: 04/07/2024

Bond: \$3400

<https://www.resbymirvac.com>



Plans shown are only indicative of layout. Dimensions are approximate.

Glebe, NSW
618/159 Ross Street