



**Glebe, NSW**  
518/1A The Crescent

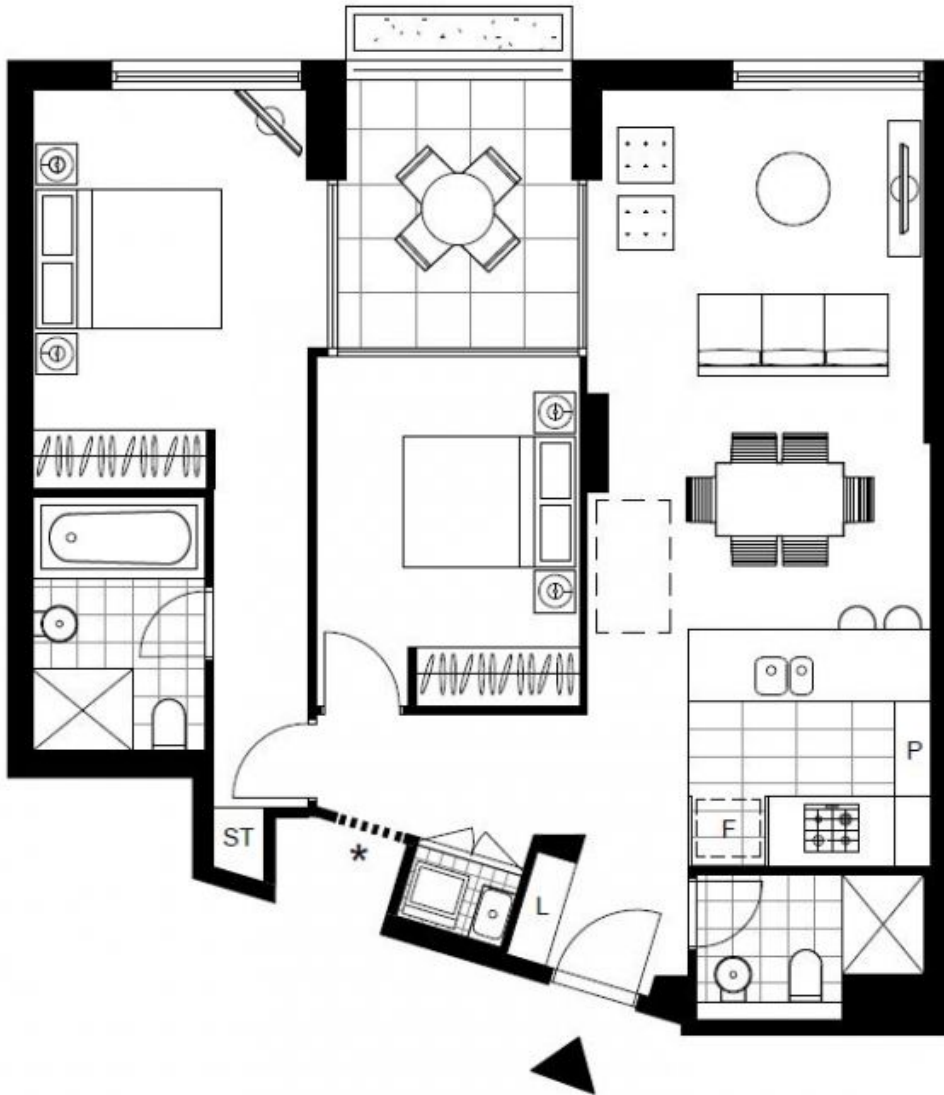
**2** BED **2** BATH **1** CAR 

**Modern & Sleek 2 Bedroom Apartment in Mirvac's Harold Park, Glebe**  
Welcome to Harold Park, Glebe's Secret Backyard.

In the charming enclave of Harold Park, you'll discover a picturesque parkside setting, just a leisurely stroll from Glebe Foreshore. Merely steps away, The Tramsheds retail precinct beckons, boasting delightful cafes, a boutique grocery store, renowned restaurants, and even a convenient medical centre. Plus, enjoy close proximity to the light rail, schools, and the city, all just a short distance away, ensuring convenience and connectivity at your fingertips.

**Deposit Taken!**  
**Contact:** Naz Sabzpouri  
02 8588 8888  
0401 545 440  
**Type:** Apartment  
**Date Available:** 04/07/2024  
<https://www.resbymirvac.com>

This 5th floor, 'Vance' apartment features:



Plans shown are only indicative of layout. Dimensions are approximate.

**Glebe, NSW**  
518/1A The Crescent