



## Glebe, NSW

519/8 Grattan Close

**2** BED **2** BATH **1** CAR 

### Modern, North Facing 2 Bedroom Apartment in Mirvac's Harold Park, Glebe

Welcome to Harold Park, Glebe's Secret Backyard.

In the charming enclave of Harold Park, you'll discover a picturesque parkside setting, just a leisurely stroll from Glebe Foreshore. Merely steps away, The Tramsheds retail precinct beckons, boasting delightful cafes, a boutique grocery store, renowned restaurants, and even a convenient medical centre. Plus, enjoy close proximity to the light rail, schools, and the city, all just a short distance away, ensuring convenience and connectivity at your fingertips.

This 105sqm, 'Altivolo' apartment features:

**\$1,200 per week**

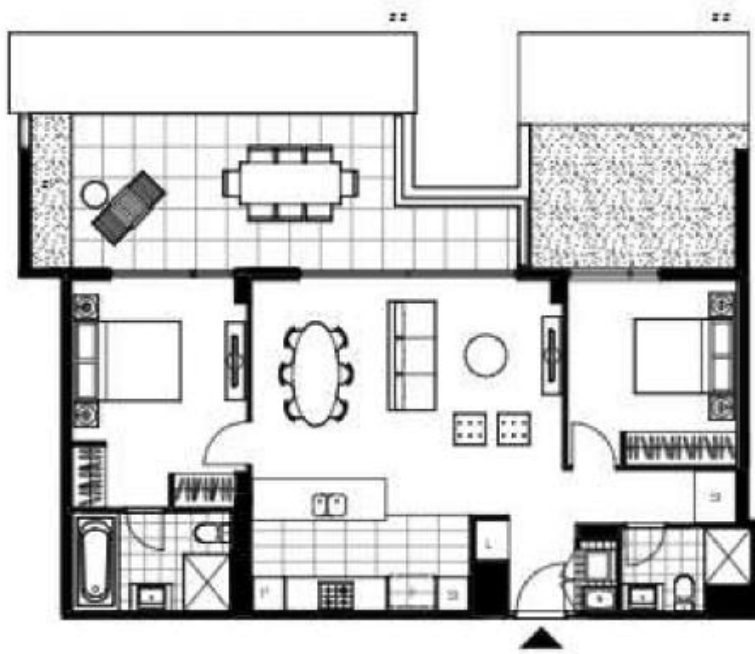
**Contact:** Naz Sabzpouri  
02 8588 8888  
0401 545 440

**Type:** Apartment

**Date Available:** 20/06/2024

**Bond:** \$4400

<https://www.resbymirvac.com>



LEVEL 5

Plans shown are only indicative of layout. Dimensions are approximate.

**Glebe, NSW**  
519/8 Grattan Close