



## Glebe, NSW

115/2 Cullen Close

**1**  
BED

**1**  
BATH



### Stylish 1 Bedroom Apartment with Leafy Outlook in Mirvac's Harold Park, Glebe

Welcome to Harold Park, Glebe's Secret Backyard.

In the charming enclave of Harold Park, you'll discover a picturesque parkside setting, just a leisurely stroll from Glebe Foreshore. Merely steps away, The Tramsheds retail precinct beckons, boasting delightful cafes, a boutique grocery store, renowned restaurants, and even a convenient medical centre. Plus, enjoy close proximity to the light rail, schools, and the city, all just a short distance away, ensuring convenience and connectivity at your fingertips.

This 7th floor, 'Maestro' apartment features:

**\$700 per week**

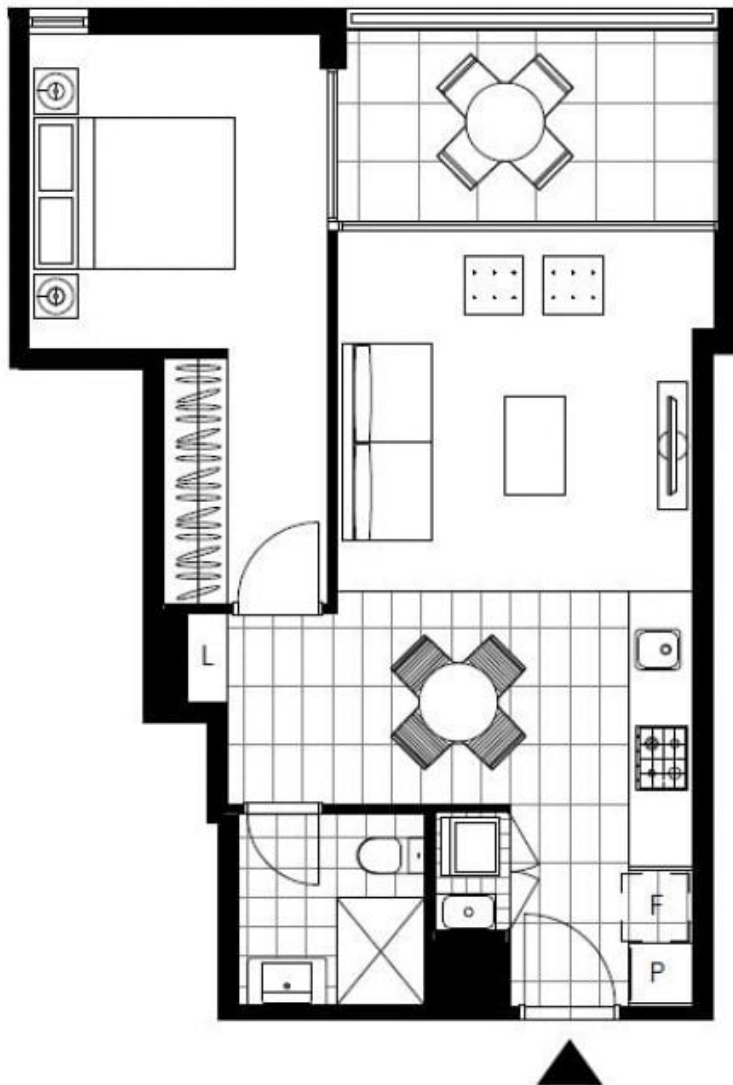
**Contact:** Naz Sabzpouri  
02 8588 8888  
0401 545 440

**Type:** Apartment

**Date Available:** 21/06/2024

**Bond:** \$2800

**<https://www.resbymirvac.com>**



Plans shown are only indicative of layout. Dimensions are approximate.

**Glebe, NSW**  
115/2 Cullen Close