

Glebe, NSW

1312/1 Scotsman Street

1
BED

1
BATH



Stylish One bedroom apartment with Study nook in Mirvac's Harold Park!

Welcome to Harold Park, Glebe's Secret Backyard.

In the charming enclave of Harold Park, you'll discover a picturesque parkside setting, just a leisurely stroll from Glebe Foreshore. Merely steps away, The Tramsheds retail precinct beckons, boasting delightful cafes, a boutique grocery store, renowned restaurants, and even a convenient medical centre. Plus, enjoy close proximity to the light rail, schools, and the city, all just a short distance away, ensuring convenience and connectivity at your fingertips.

This 63sqm, 'Maestro' features:

\$800 per week | Deposit Taken

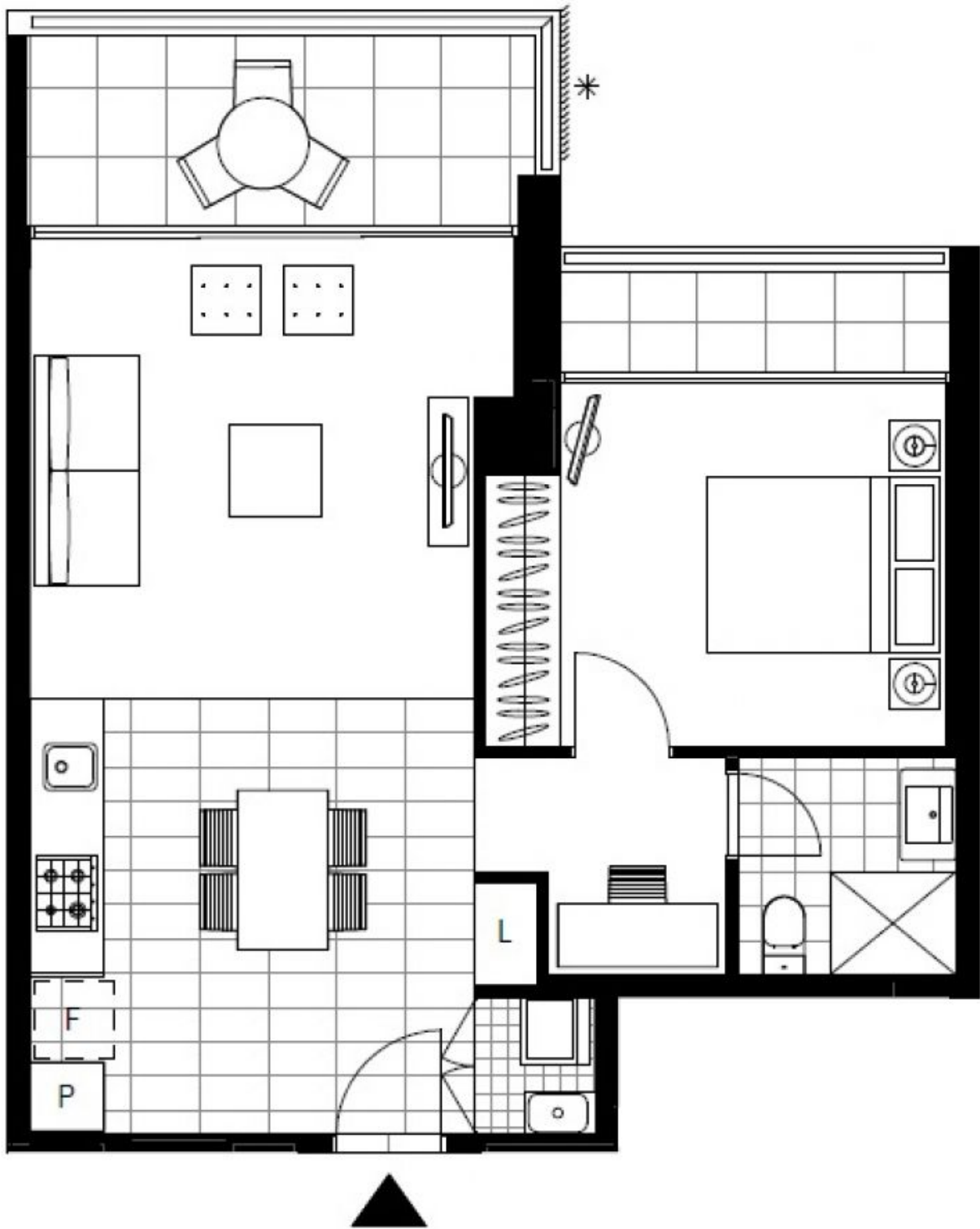
Contact: Naz Sabzpour
02 8588 8888
0401 545 440

Type: Apartment

Date Available: 08/06/2024

Bond: \$3200

<https://www.resbymirvac.com>



LEVEL 3, 4, 5

Plans shown are only indicative of layout. Dimensions are approximate.

Glebe, NSW
1312/1 Scotsman Street