

Glebe, NSW

601/2 Scotsman Street



2- Bedroom Apartment in Mirvac's Harold Park!

Welcome to Harold Park, Glebe's Secret Backyard.

Here in Harold Park you will find yourself in an idyllic parkside location, with only a short walk to Glebe Foreshore. Just meters away, The Tramsheds retail precinct resides featuring cafes, a grocery store, restaurants and a medical centre.

This 6th floor Apartment has to offer:

- Spacious bedrooms with generous built-in wardrobes
- Open-plan living and dining area, great for entertaining
- Contemporary kitchen with stone benchtops and Miele appliances

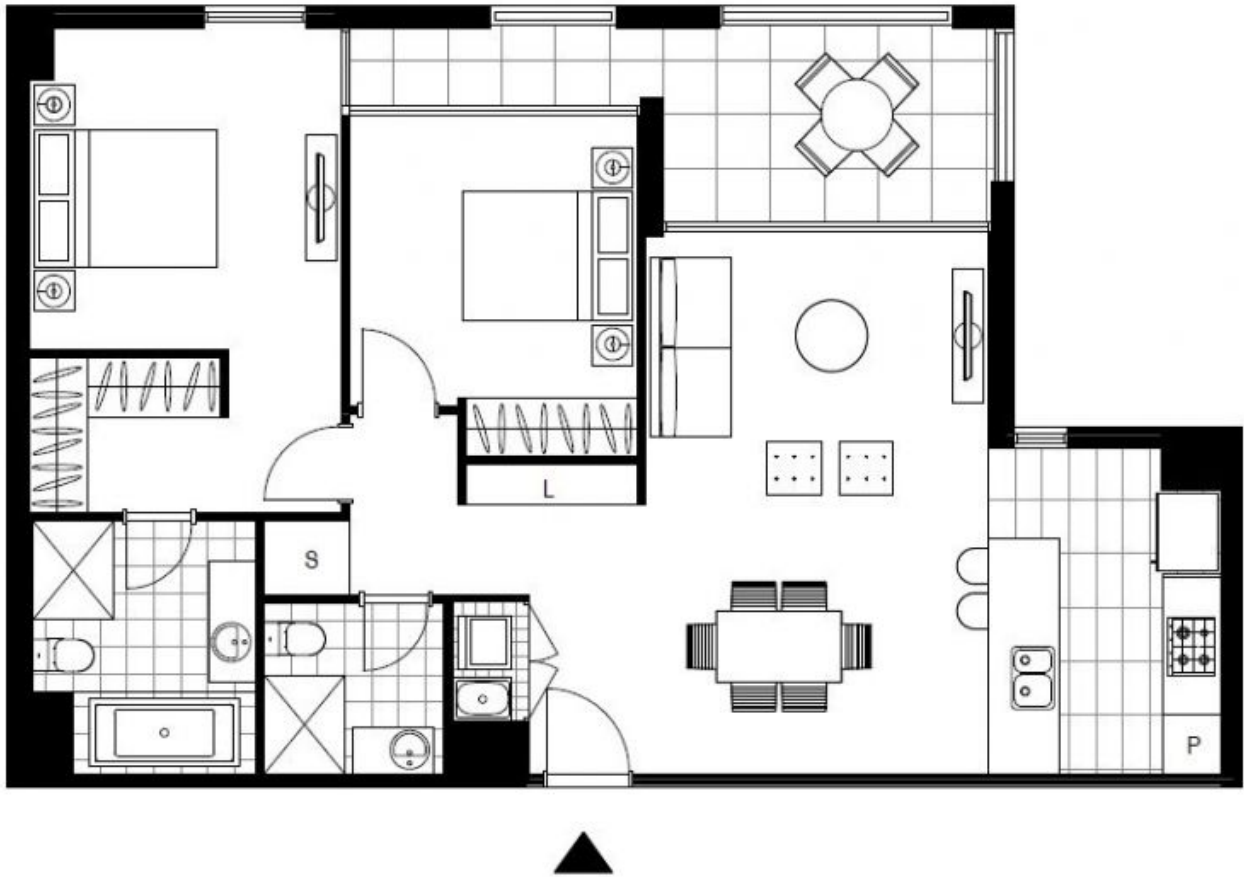
Deposit Taken!

Contact: Naz Sabzpour
02 8588 8888
0401 545 440

Type: Apartment

Date Available: 20/06/2024

<https://www.resbymirvac.com>



Plans shown are only indicative of layout. Dimensions are approximate.

Glebe, NSW
601/2 Scotsman Street