



**Zetland, NSW**  
501/16 Zetland Avenue

**1**  
BED

**1**  
BATH



### Luxury Meets City Living in this 1-Bedroom Apartment in Mirvac's Brand New "Portman on the Park"

Welcome to Portman on the Park by Mirvac

Nestled within one of Sydney's burgeoning residential enclaves, 'Portman on the Park' exudes sophistication and exclusivity. Embraced by newly completed Drying Green parkland, alongside the prestigious Green Square Train Station, Library, and the opulent Gunyama Aquatic and Recreation Centre, this residence epitomizes refined urban living. Indulge in the epitome of convenience with a myriad of upscale amenities at your fingertips, including esteemed schools, bespoke dining destinations, charming cafes, and verdant parklands-all mere moments from your doorstep.

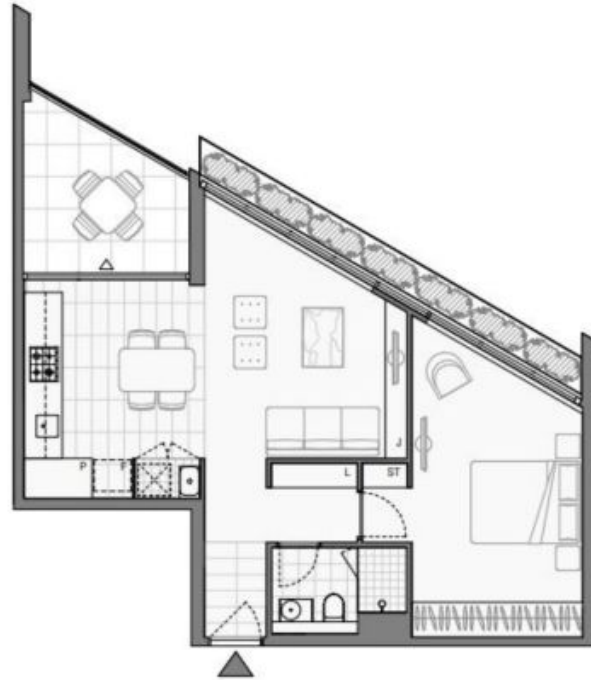
### DEPOSIT TAKEN | LEASED FIRST INSPECTION

**Contact:** Kevin Tam  
02 8588 8888  
0481 735 222

**Type:** Apartment

**Date Available:** 30/06/2024

**<https://www.resbymirvac.com>**



Please note that this floor plan is a guide only  
The information contained herein is not guaranteed.  
Dimensions are approximate.  
Prospective renters must rely on their own enquiries.

501/16 Zetland Ave, Zetland



Plans shown are only indicative of layout. Dimensions are approximate.

**Zetland, NSW**  
501/16 Zetland Avenue