



Zetland, NSW
802/16 Zetland Avenue

2 **2**
BED BATH



Brand New 2 Bedroom Apartment Overlooking the "Drying Green" Park in Mirvac's "Portman on the Park"

Welcome to Portman on the Park by Mirvac

Nestled within one of Sydney's burgeoning residential enclaves, 'Portman on the Park' exudes sophistication and exclusivity. Embraced by newly completed Drying Green parkland, alongside the prestigious Green Square Train Station, Library, and the opulent Gunyama Aquatic and Recreation Centre, this residence epitomizes refined urban living. Indulge in the epitome of convenience with a myriad of upscale amenities at your fingertips, including esteemed schools, bespoke dining destinations, charming cafes, and verdant parklands-all mere moments from your doorstep.

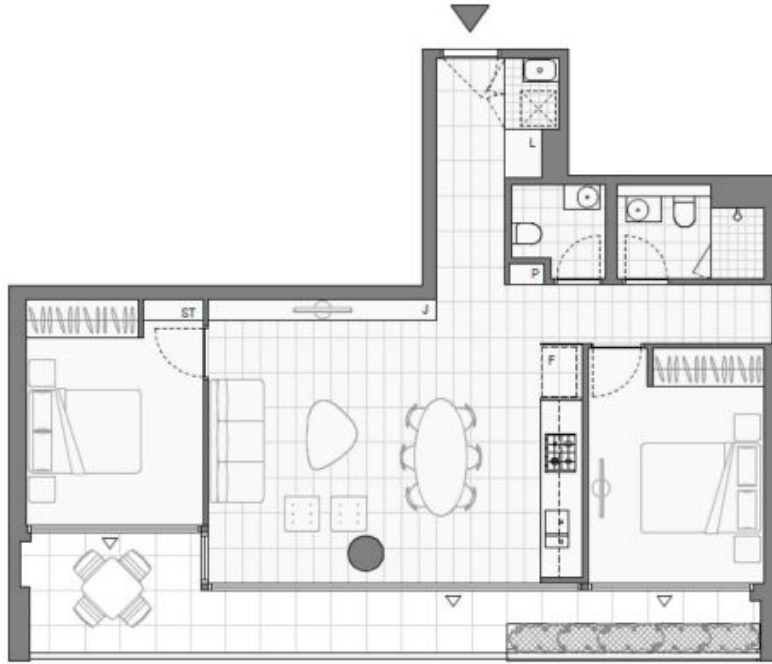
DEPOSIT TAKEN | More Apartments Available

Contact: Kevin Tam
02 8588 8888
0481 735 222

Type: Apartment

Date Available: 30/06/2024

<https://www.resbymirvac.com>



Please note that this floor plan is a guide only
The information contained herein is not guaranteed.
Dimensions are approximate.
Prospective renters must rely on their own enquiries.

802/16 Zetland Ave, Zetland



Plans shown are only indicative of layout. Dimensions are approximate.

Zetland, NSW
802/16 Zetland Avenue