



Docklands, VIC

708/60 Lorimer Street

1 BED 1 BATH 1 CAR 

1 Bedroom apartment in premier Yarra's Edge precinct

Welcome to Yarra's Edge, Docklands' most prestigious riverside community.

A perfectly positioned waterfront location, only moments away from an array of cafes, restaurants, parks, Yarra's Edge promenade and IGA supermarket. Entertain guests on Tower 2's rooftop terrace kitchen garden and BBQ area.

Apartment Features:

- Expansive terrace perfect for entertaining
- Galley style kitchen with ample storage
- Gas stainless steel appliances, integrated dishwasher
- Generous bedroom with walk-in robe

\$560 per week

Contact: Aleiasha Clark
03 9645 1199
0491 174 507

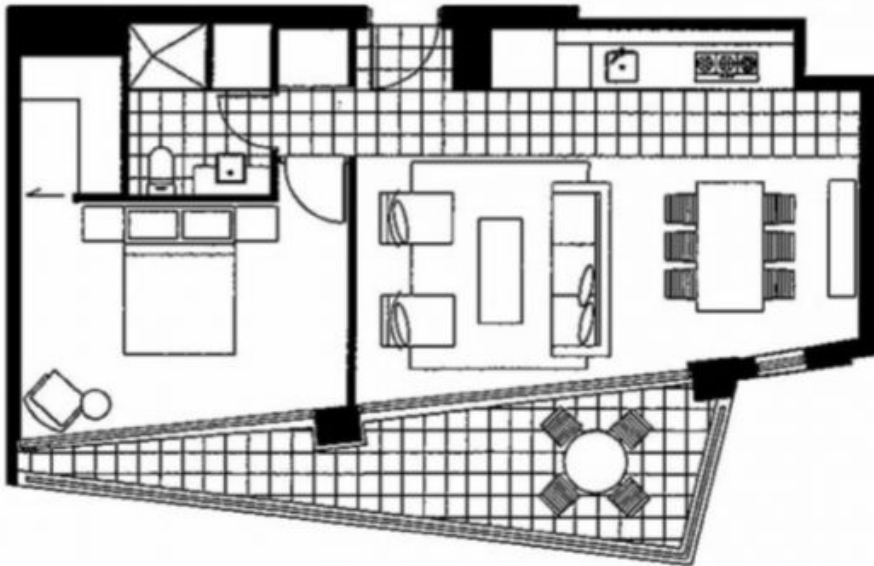
Type: Apartment

Date Available: 25/03/2024

<https://www.resbymirvac.com>



1 1 1



Please note that this floor plan is a guide only. The information contained herein is not guaranteed. Dimensions are approximate. Prospective purchasers must rely on their own enquiries.



real estate
services
by mirvac

708/60 Lorimer Street

Plans shown are only indicative of layout. Dimensions are approximate.

Docklands, VIC
708/60 Lorimer Street