



Glebe, NSW

411/2 Cullen Close

1 **1**
BED BATH



Spacious 1-Bedroom Apartment in Mirvac's Harold Park, Glebe!

Welcome to Harold Park, Glebe!

Here in Harold Park you will find yourself in an idyllic parkside location, with only a short walk to Glebe Foreshore. Just meters away, The Tramsheds retail precinct resides featuring cafes, a grocery store, restaurants and a medical centre.

This 4th floor, 1 bedroom apartment offers:

- Sunny kitchen with Caesar bench tops and Miele appliances
- Large separate bedroom with built-ins
- Open plan living, opening onto balcony

Deposit Taken!

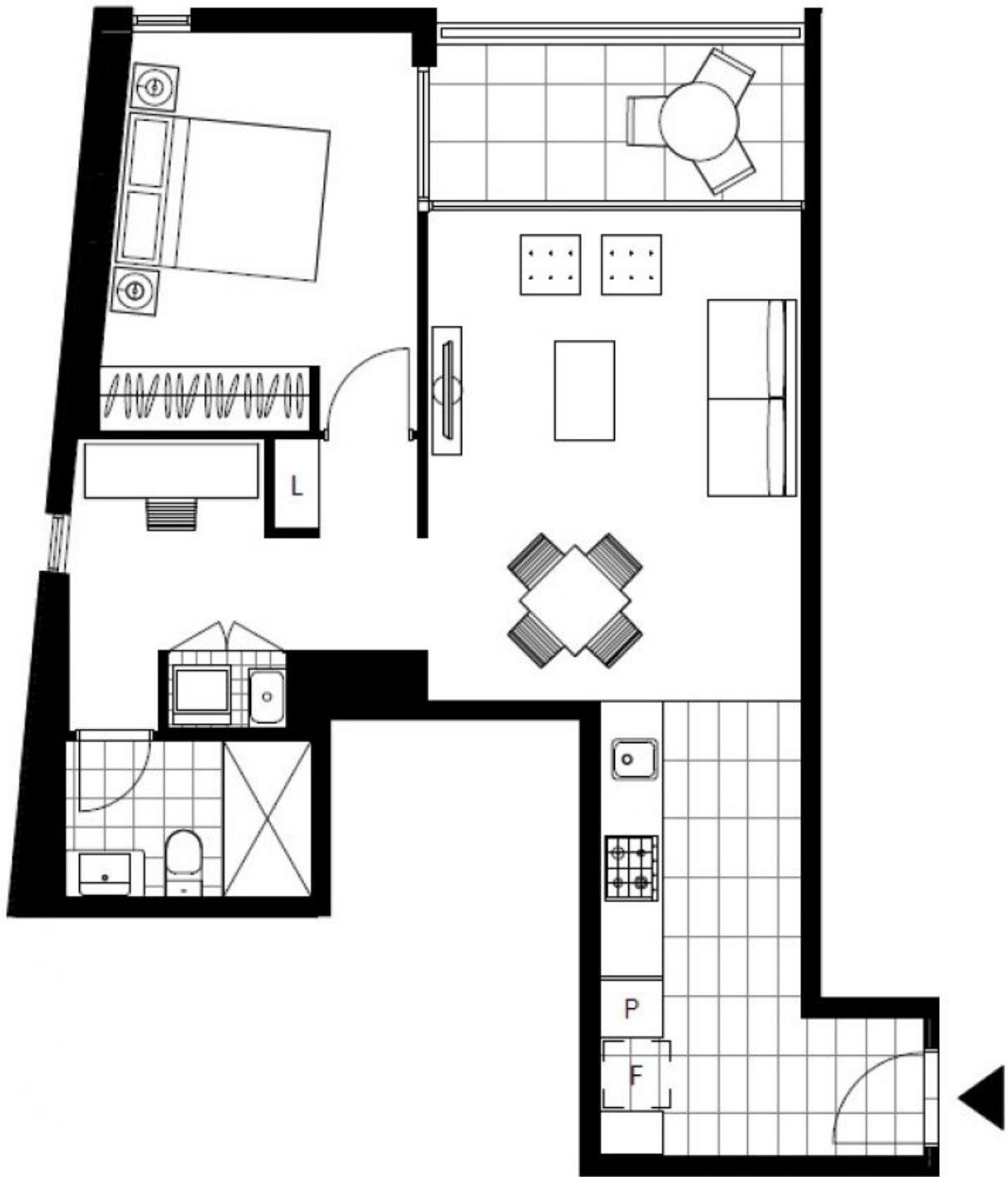
Contact: Naz Sabzpouri
02 8588 8888
0401 545 440

Type: Apartment

Date Available: 14/03/2024

Land: 63Square Metres

<https://www.resbymirvac.com>



LEVEL 4, 5

Plans shown are only indicative of layout. Dimensions are approximate.

Glebe, NSW
411/2 Cullen Close