

**Glebe, NSW**  
302/21 Scotsman Street

**2** BED **2** BATH **1** CAR 

### Garden Facing Two Bedroom Apartment in Harold Park, Glebe!

Welcome to Harold Park, Glebe's Secret Backyard.

Here in Harold Park you will find yourself in an idyllic parkside location, with only a short walk to Glebe Foreshore. Just meters away, The Tramsheds retail precinct resides featuring cafes, a grocery store, restaurants and a medical centre.

This 100sqm apartment has to offer:

- Spacious bedrooms with generous built-in wardrobes
- Contemporary kitchen with stone benchtops and Miele appliances
- Modern bathrooms with with plenty of vanity storage, bathtub in ensuite

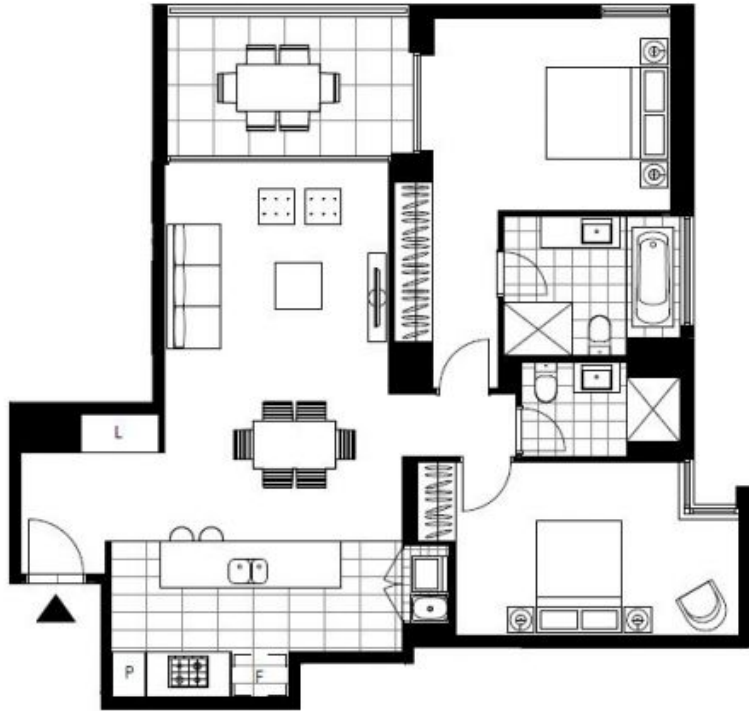
### Deposit Taken!

**Contact:** Naz Sabzpour  
02 8588 8888  
0401 545 440

**Type:** Apartment

**Date Available:** 07/02/2024

<https://www.resbymirvac.com>



LEVEL 3

Plans shown are only indicative of layout. Dimensions are approximate.

**Glebe, NSW**  
302/21 Scotsman Street