



RES real estate services by mirvac



RES real estate services by mirvac



Docklands, VIC
303/100 Lorimer Street

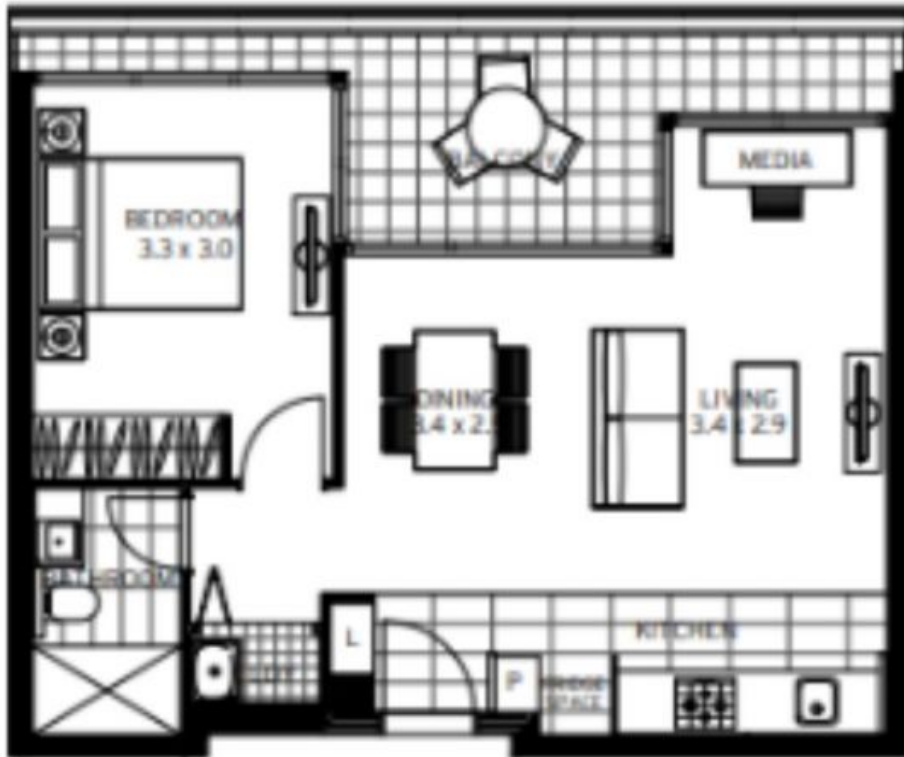
1 BED **1** BATH **1** CAR



Luxurious Waterfront Living at Yarra's Edge
Nestled within the enchanting Yarra's Edge, discover a meticulously situated waterfront haven just moments away from a captivating array of cafes, exquisite restaurants, verdant parks, the charming Yarra's Edge promenade.

- Property Features:
- Breathtaking city and marina views
 - Open plan living/ dining flowing to waterfront balcony
 - Video intercom, security entrance
 - Spacious bedroom with BIR
 - Stylish main bathroom
 - European laundry
 - Secure parking X1

\$640 per week
Contact: Shiv Naidu
0396451199
0408 527 174
Aleisha Clark
03 9645 1199
0491 174 507
Type: Apartment
Date Available: 01/03/2023
<https://www.resbymirvac.com>



LEVEL 3

Please note that this floor plan is a guide only. The information contained herein is not guaranteed. Dimensions are approximate. Prospective purchasers must rely on their own enquiries.



303/100 Lorimer St

DOCKLANDS

Plans shown are only indicative of layout. Dimensions are approximate.

Docklands, VIC
303/100 Lorimer Street