

Glebe, NSW

502/10 Scotsman Street

2 BED **2** BATH **1** CAR **RES**

Oversized North-Facing 2-Bedroom Apartment with Parking in Glebe

Welcome to Harold Park!

Here in Harold Park you will find yourself in an idyllic parkside location, with only a short walk to Glebe Foreshore. Just meters away, The Tramsheds retail precinct resides featuring cafes, a grocery store, restaurants and a medical centre.

This 112sqm, 5th floor apartment features:

- Generously appointed bedrooms floor-to-ceiling built-in wardrobes
- Open-plan living and dining area, leading to North facing balcony
- Contemporary island kitchen with stone benchtops and built-in Miele appliances

Deposit Taken | Parking Included!

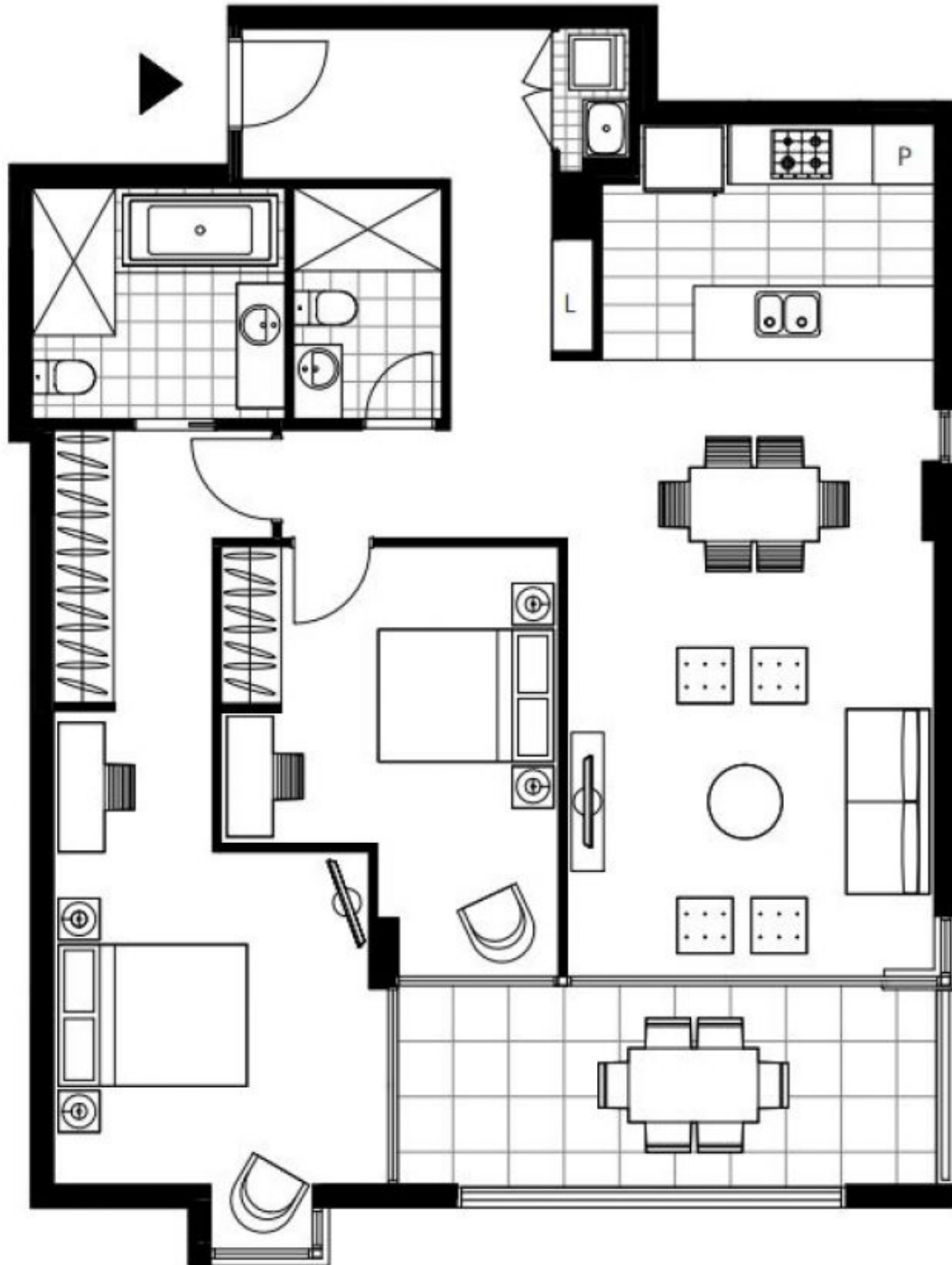
Contact: Naz Sabzpouri
02 8588 8888
0401 545 440

Type: Apartment

Date Available: 05/02/2024

Bond: \$4800

<https://www.resbymirvac.com>



Plans shown are only indicative of layout. Dimensions are approximate.

Glebe, NSW
502/10 Scotsman Street