

Altona North, VIC

2 Heide Way

3 BED **2** BATH **1** CAR 

Discover The Fabric by Mirvac: A Perfect Blend of Convenience and Serenity in Melbourne's Inner West

Welcome to The Fabric by Mirvac, discover the Perfect Melange of Convenience and Serenity in Melbourne's Thriving Inner West. Enveloped by Lush Parks and Enchanting Greenery, Mirvac has curated an Inviting Community Hub,

Property Features:

- Picturesque park views from the warmth of your Mirvac home
- Seamless open-plan living and dining area leading to a charming balcony featuring servery adjoining to the kitchen bench
- Well-appointed gourmet kitchen featuring stainless steel appliances, an induction cooktop, and a dishwasher
- Integrated fridge/ freezer and microwave

\$750 per week

Contact: Aleiasha Clark
03 9645 1199
0491 174 507

Type: Townhouse

Date Available: 19/02/2024

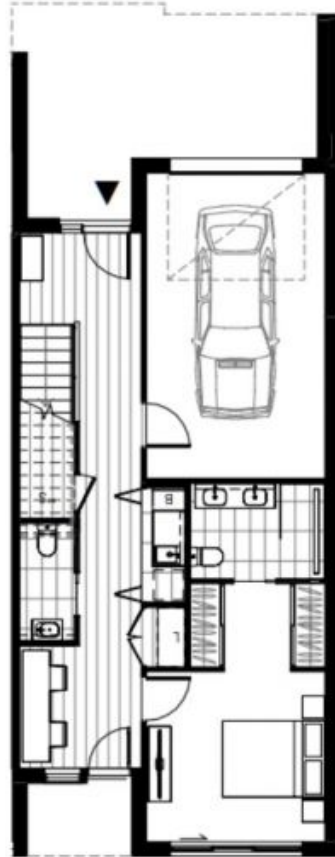
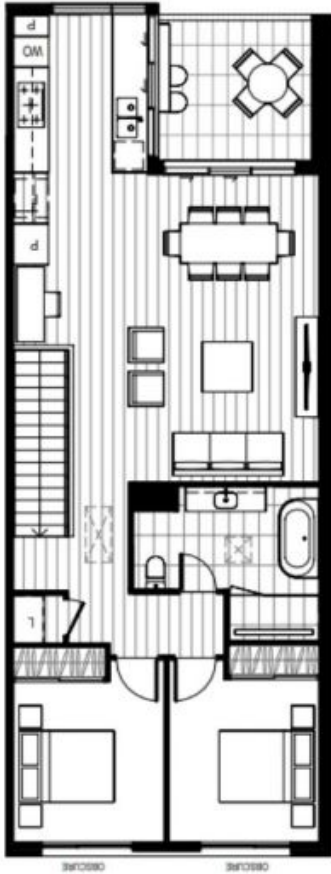
<https://www.resbymirvac.com>



3

2

1



2 Heide Way

Altona North

Plans shown are only indicative of layout. Dimensions are approximate.

Altona North, VIC
2 Heide Way