



Zetland, NSW

203/6 Ebsworth Street

1 BED **1** BATH



Premium 1-Bedroom Apartment in Green Square, Zetland

This 54sqm, 1-Bedroom apartment features:

- Well-appointed bedroom with floor-to-ceiling built-in wardrobe
- Functional living and dining area, with access to balcony
- Modern kitchen with stone benchtop and built-in Smeg appliances
- Sleek bathroom with plenty of generous vanity storage
- Internal laundry with dryer included
- Secure storage cage included
- Ducted A/C, video intercom and NBN connectivity
- 300m to Woolworths, The Social Corner and Green Square Train Station (10mins to the City)
- Parking available for lease in building for additional fee

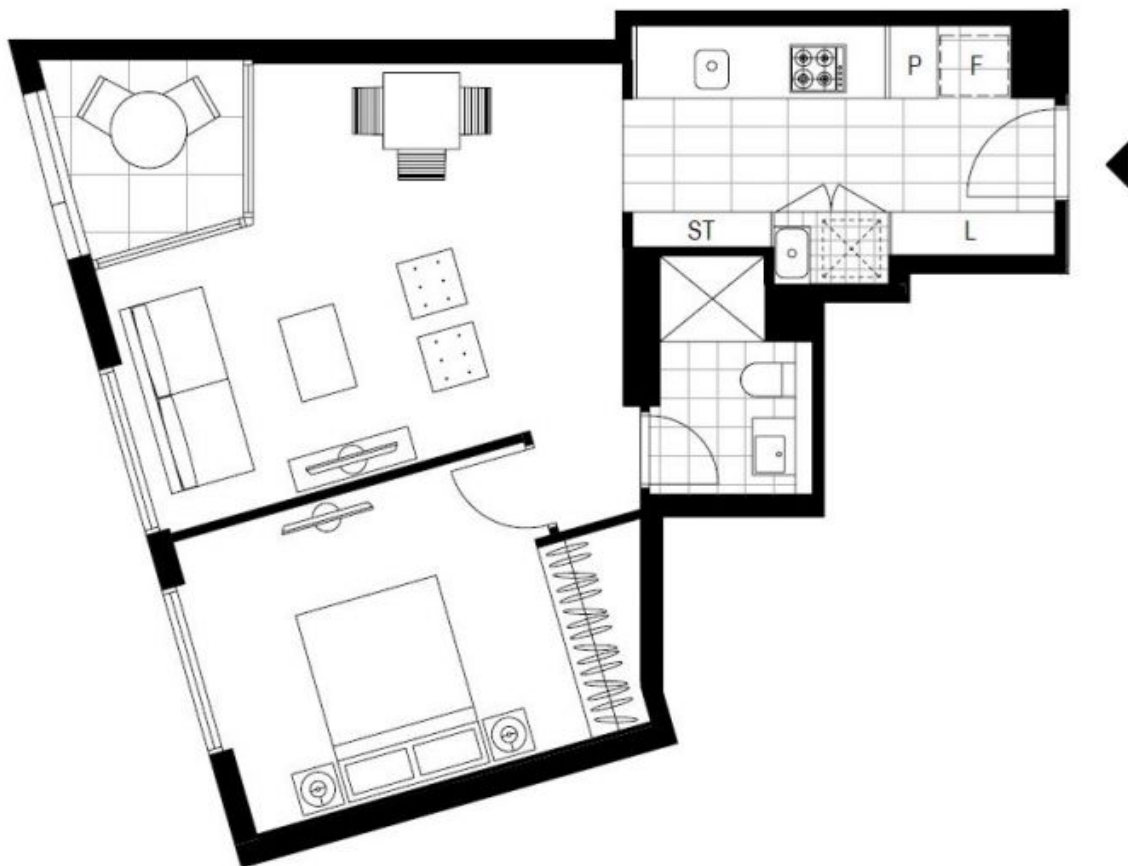
DEPOSIT TAKEN | LEASED OFF MARKET

Contact: Kevin Tam
02 8588 8888
0481 735 222

Type: Apartment

Date Available: 14/02/2024

<https://www.resbymirvac.com>



Plans shown are only indicative of layout. Dimensions are approximate.

Zetland, NSW
203/6 Ebsworth Street