



Glebe, NSW
703/5 Grattan Close

1 BED **1** BATH



Oversized 70sqm 1-Bedroom Apartment in Harold Park
Welcome to Harold Park, Glebe's Secret Backyard.

Here in Harold Park you will find yourself in an idyllic parkside location, with only a short walk to Glebe Foreshore. Just meters away, The Tramsheds retail precinct resides featuring cafes, a grocery store, restaurants and a medical centre.

This 70sqm, 7th level Apartment offers;

- Large bedroom with a generous built-in wardrobe
- Modern kitchen with a stone benchtop and Miele appliances, fridge included
- Sleek bathroom with plenty of storage

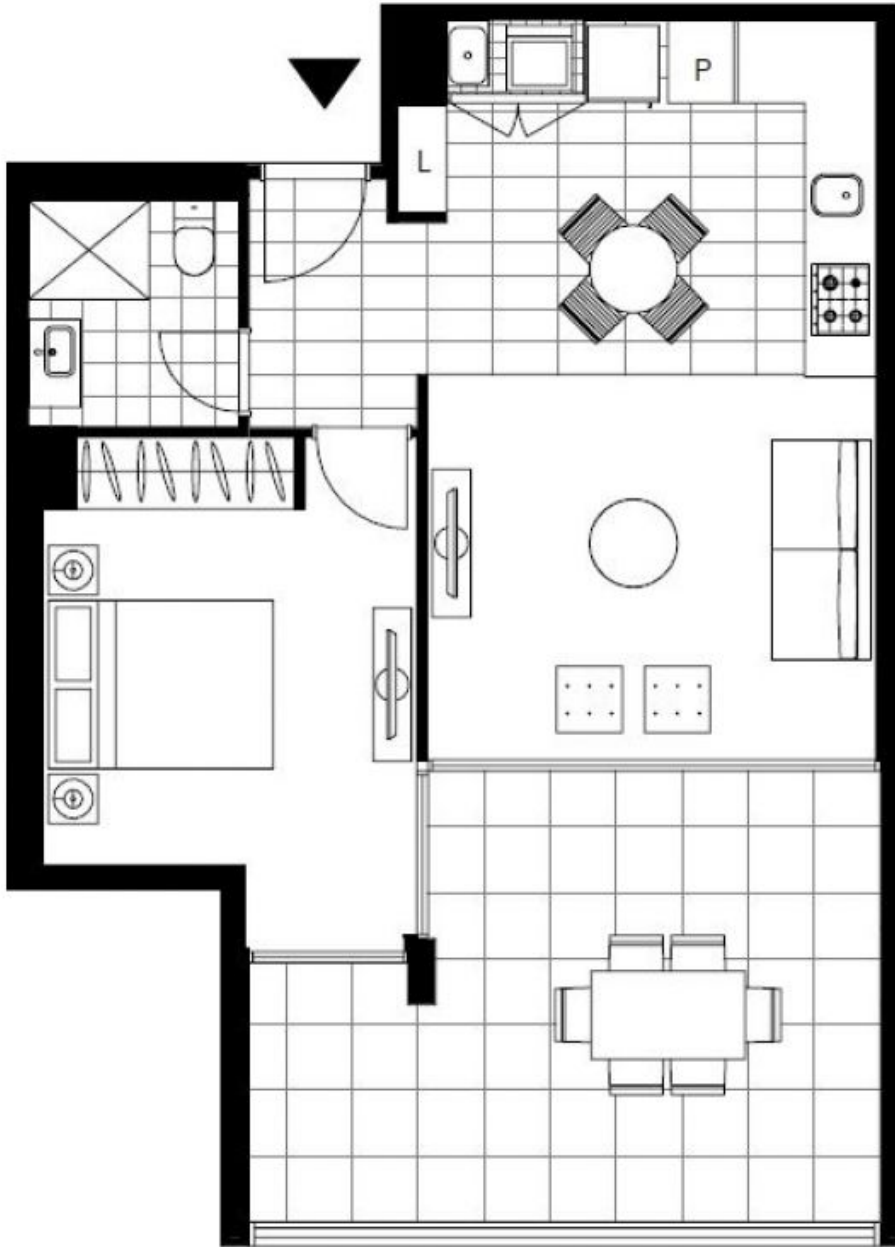
\$850 per week | Deposit Taken!

Contact: Naz Sabzpour
02 8588 8888
0401 545 440

Type: Apartment

Date Available: 03/02/2024

<https://www.resbymirvac.com>



Plans shown are only indicative of layout. Dimensions are approximate.

Glebe, NSW
703/5 Grattan Close