



## Willoughby, NSW

102/1 Scott Street

**1**  
BED

**1**  
BATH



### Oversized, East Facing 1 Bedroom Apartment with Study Area in Heart of Willoughby

Welcome to NINE by Mirvac

Nestled within the picturesque Lower North Shore, just 6km from Sydney's vibrant CBD and a mere 3.2km from the heart of North Sydney, resides the highly anticipated NINE by Mirvac. Embracing a lifestyle at NINE offers seamless connections, with the convenience of Artarmon Train Station (only 1.7km away), the bustling Chatswood CBD (merely 3.9km away), and easy access to the M1 & M2 road networks. This haven is also surrounded by local boutiques, esteemed schools, verdant parklands, a state-of-the-art leisure centre, and an array of delectable dining options.

This 76sqm, 'Montage' apartment features:

### DEPOSIT TAKEN | More available!

**Contact:**

Carmen Whiteley

02 8588 8888

0497 555 519

Christine Howison

02 8588 8888

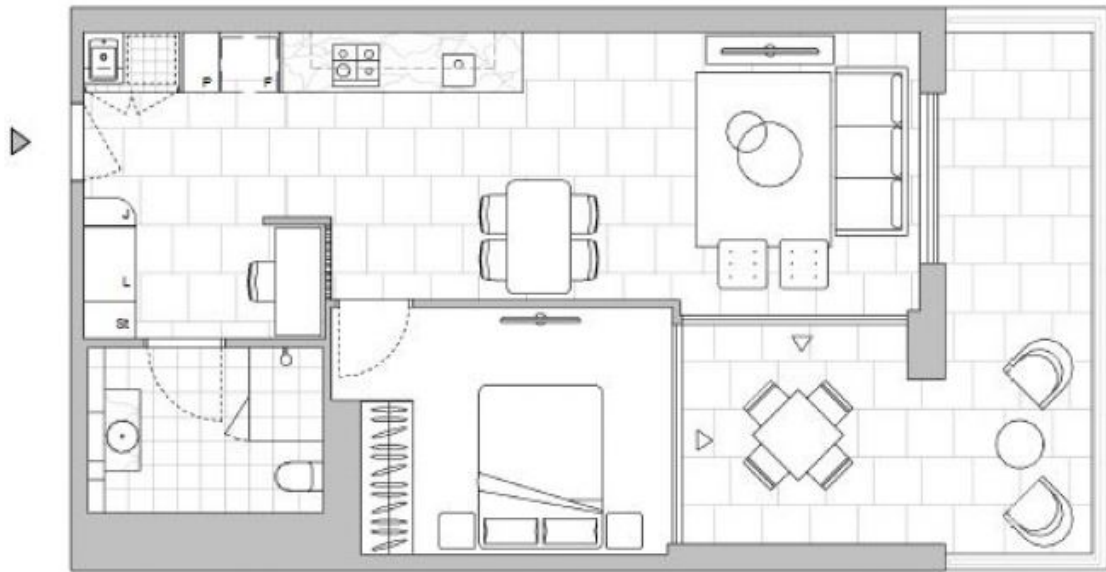
0459 222 085

**Type:**

Apartment

**Date Available:** 17/01/2024

<https://www.resbymirvac.com>



Plans shown are only indicative of layout. Dimensions are approximate.

**Willoughby, NSW**  
102/1 Scott Street