



Zetland, NSW
608/28 Zetland Avenue

2 **2**
BED BATH



Sophisticated 2 Bedroom Apartment with Park & City Views in 'The Frederick', Green Square

Welcome to The Frederick by Mirvac.

Found in one of Sydney's fastest growing residential precincts, The Frederick is perfectly situated amongst the nearly completed Drying Green parkland, Green Square Train Station, Green Square Library and Gunyama Aquatic and Recreation Centre. You will also find yourself within minutes of shops, schools, child care centres, restaurants, cafes and parklands. Residents will also enjoy exclusive access to world-class amenities such as a wellness studio and gym, business centre and sky lounge.?

This 90sqm, brand new apartment features:

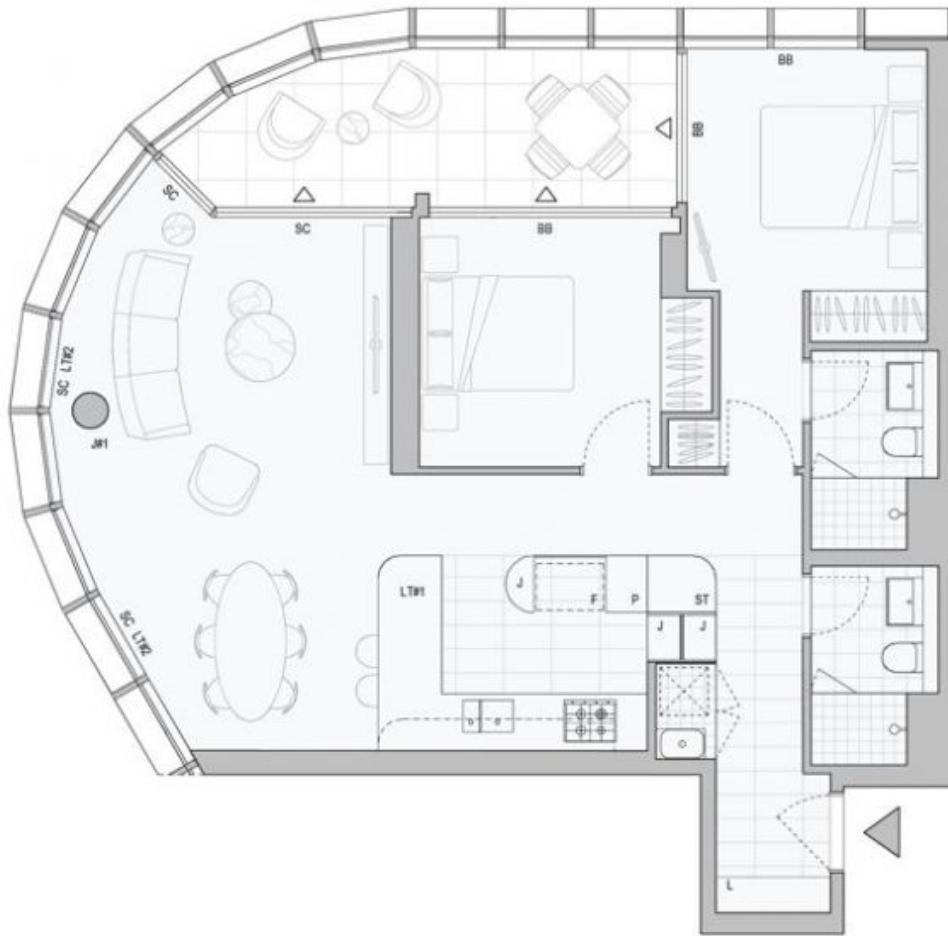
DEPOSIT TAKEN

Contact: Carmen Whiteley
02 8588 8888
0497 555 519

Type: Apartment

Date Available: 29/12/2023

<https://www.resbymirvac.com>



Plans shown are only indicative of layout. Dimensions are approximate.

Zetland, NSW
608/28 Zetland Avenue