



Docklands, VIC

2403/81 South Wharf Drive

3 BED **2** BATH **2** CAR 

Indulge in a lifestyle of luxury with this Yarra's Edge 3Bedroom apartment

Nestled within an impeccably positioned waterfront locale, Forge Tower beckons you to relish the privilege of residing in the very heart of Melbourne's most sought-after precinct. Here, you can immerse yourself in the serene ambiance of Yarra's Edge while enjoying seamless access to a captivating array of cafes, world-class restaurants, verdant parks, the picturesque Yarra's Edge promenade, and the convenience of an IGA supermarket.

Apartment features:

- Revel in breathtaking vistas of the Yarra's Edge marina, Yarra River, and Melbourne's iconic skyline.
- Delight in culinary experiences within the expansive living and dining area

\$1,100 per week

Contact: Aleiasha Clark
03 9645 1199
0491 174 507

Type: Apartment

Date Available: 08/01/2024

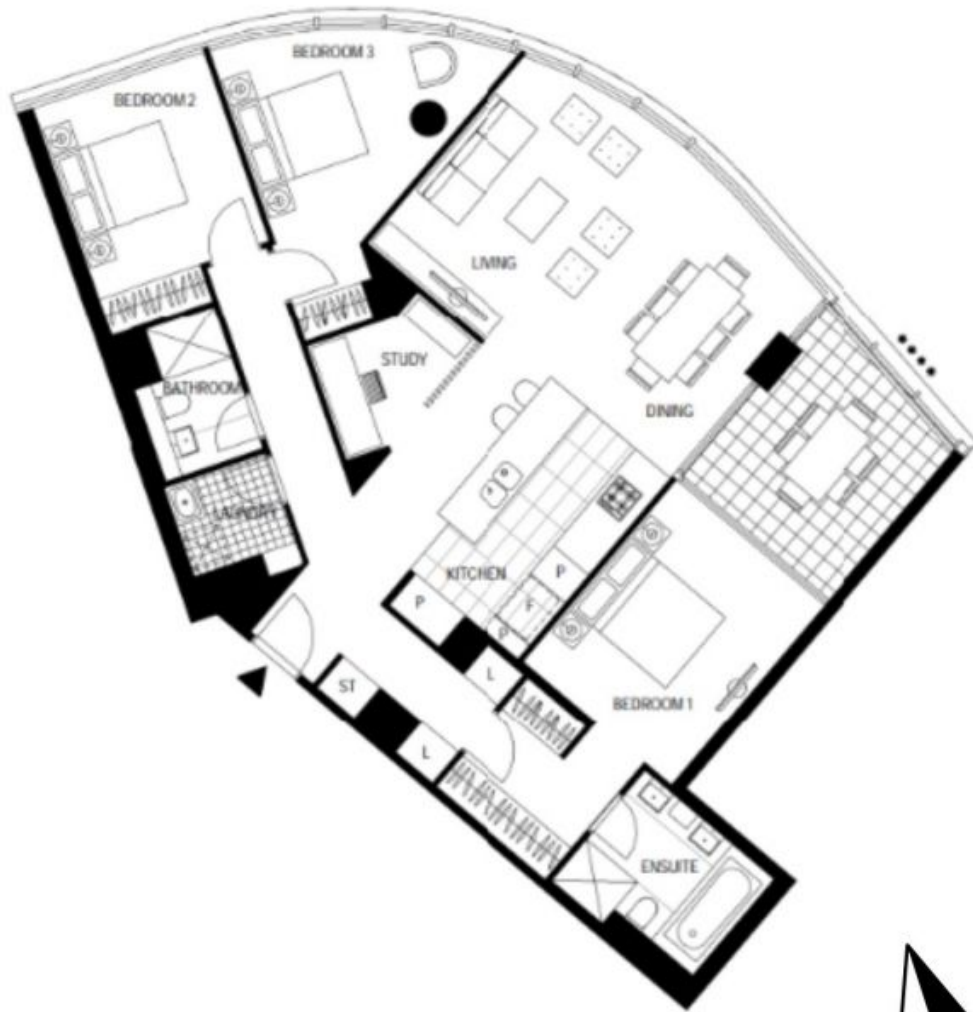
<https://www.resbymirvac.com>



3

2

2



LEVEL 24

Please note that this floor plan is a guide only. The information contained herein is not guaranteed. Dimensions are approximate. Prospective purchasers must rely on their own enquiries.



2403/81 South Wharf Drive

DOCKLANDS

Plans shown are only indicative of layout. Dimensions are approximate.

Docklands, VIC
2403/81 South Wharf Drive