

Willoughby, NSW

205/5 Scott Street

1
BED

1
BATH



Bright & Sun-Filled 1 Bedroom with Study Nook in NINE by Mirvac

Welcome to NINE by Mirvac

Nestled within the picturesque Lower North Shore, just 6km from Sydney's vibrant CBD and a mere 3.2km from the heart of North Sydney, resides the highly anticipated NINE by Mirvac. Embracing a lifestyle at NINE offers seamless connections, with the convenience of Artarmon Train Station (only 1.7km away), the bustling Chatswood CBD (merely 3.9km away), and easy access to the M1 & M2 road networks. This haven is also surrounded by local boutiques, esteemed schools, verdant parklands, a state-of-the-art leisure centre, and an array of delectable dining options.

This 66sqm, 2nd floor apartment features:

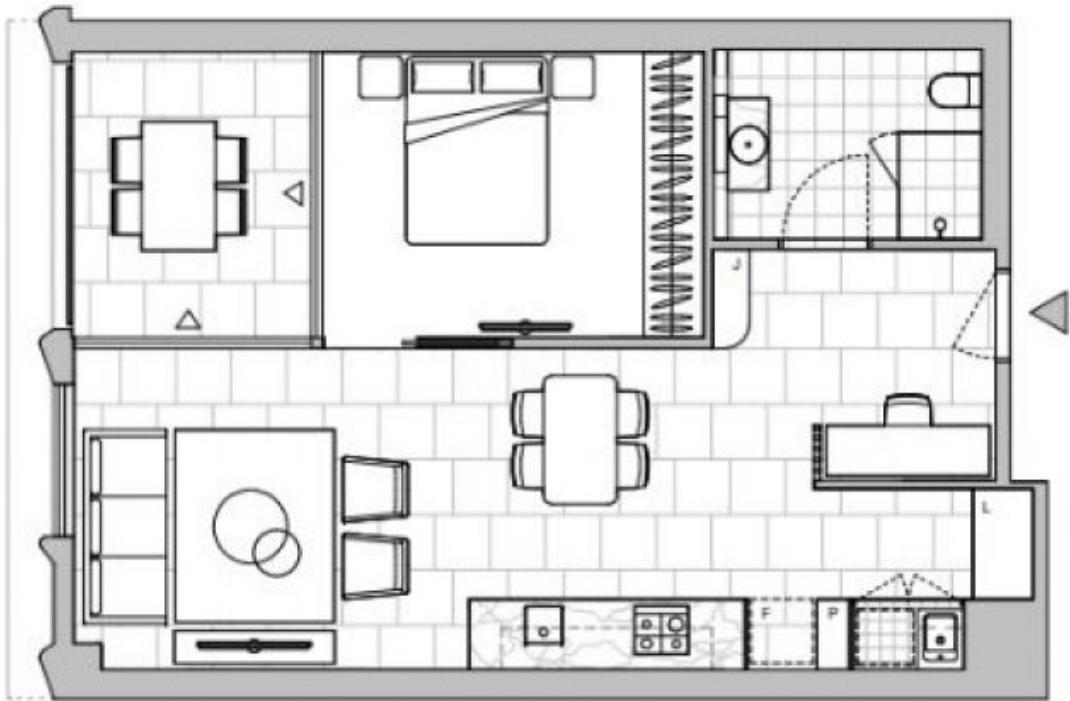
DEPOSIT TAKEN

Contact: Carmen Whiteley
02 8588 8888
0497 555 519
Christine Howison
02 8588 8888
0459 222 085

Type: Apartment

Date Available: 22/12/2023

<https://www.resbymirvac.com>



Plans shown are only indicative of layout. Dimensions are approximate.

Willoughby, NSW
205/5 Scott Street