



**Sydney Olympic Park, NSW**  
22606/2 Figtree Drive

**2** BED **2** BATH **2** CAR 

**Sunny 2 Bedroom Apartment in Mirvac's Pavilions at Sydney Olympic Park**

Welcome to Pavilions in Sydney Olympic Park

Located in Sydney Olympic Park, you will find yourself within close proximity to an abundance of parklands, cafes, restaurants & bars, public transport and world-class sporting facilities. As a resident in Pavilions by Mirvac you will enjoy access to a gym, co-working space as well as a children's play area.

This 26th floor, 2 bedroom apartment features:

- Well-appointed bedrooms with floor-to-ceiling built-in wardrobes
- Spacious living and dining area, with access to balcony

**\$920 per week | Deposit Taken!**

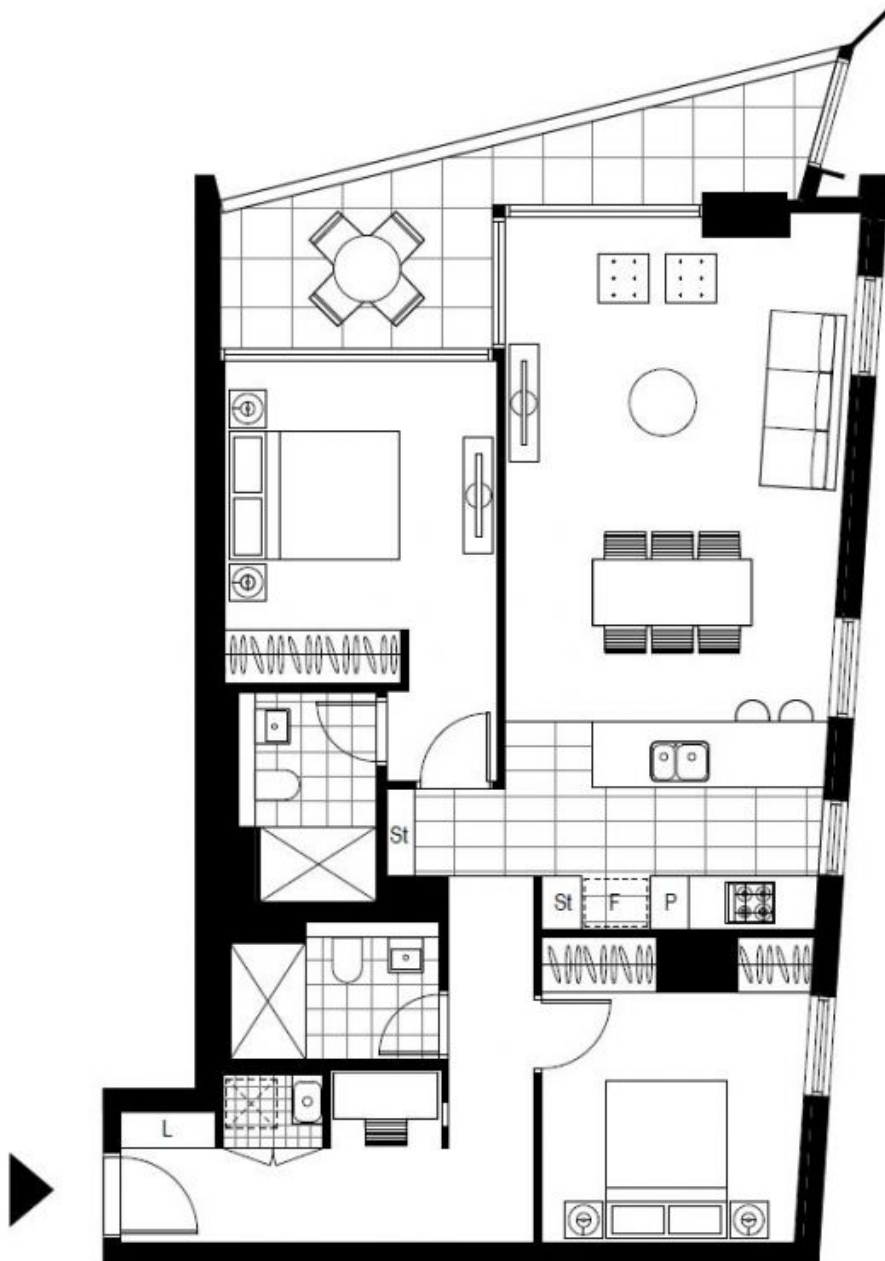
**Contact:** Christine Howison  
02 8588 8888  
0459 222 085  
Georgia Glynn  
02 8588 8888  
0481 388 777

**Type:** Apartment

**Date Available:** 15/11/2023

**Bond:** \$3600

<https://www.resbymirvac.com>



Plans shown are only indicative of layout. Dimensions are approximate.

**Sydney Olympic Park, NSW**  
22606/2 Figtree Drive