



Glebe, NSW
411/172 Ross Street

3 BED **2** BATH **2** CAR 

Highly Sought After 3-Bedroom Apartment in Harold Park

Welcome to Harold Park, Glebe's Secret Backyard.

Here in Harold Park you will find yourself in an idyllic parkside location, with only a short walk to Glebe Foreshore. Just meters away, The Tramsheds retail precinct resides featuring cafes, a grocery store, restaurants and a medical centre.

This 129sqm, 3-Bedroom Apartment features:

- Large bedrooms with built-in wardrobes
- Open-plan living and dining area
- Modern kitchen with stone benchtops and Miele appliances

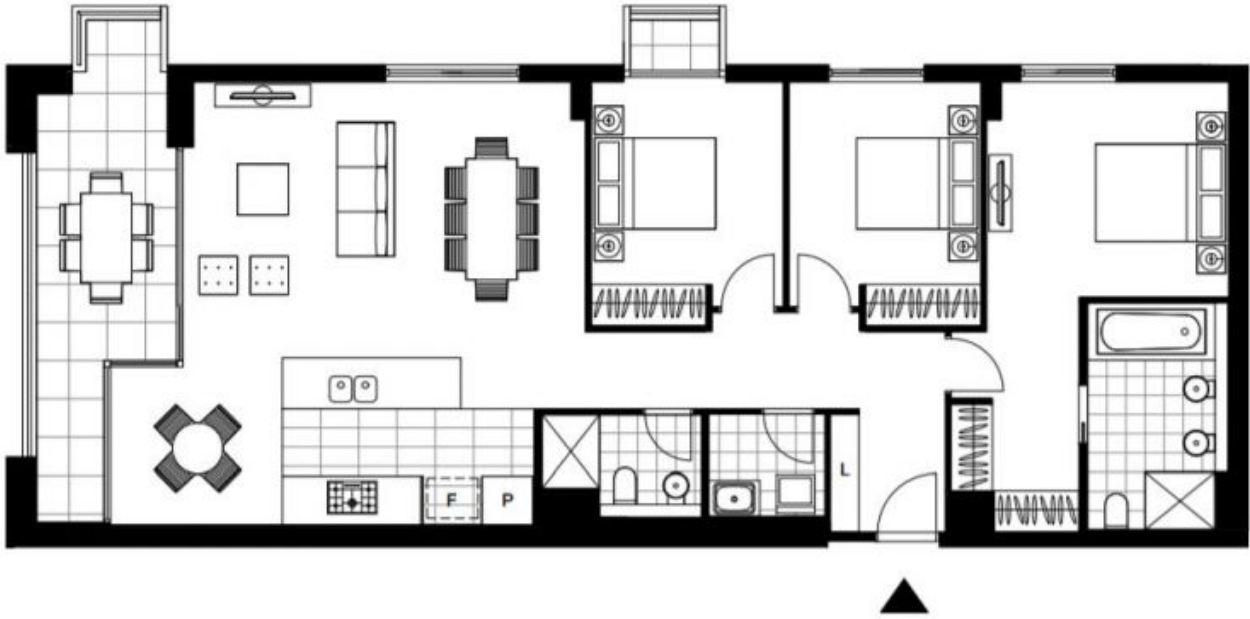
\$1550 per week | Deposit Taken!

Contact: Georgia Glynn
02 8588 8888
0481 388 777

Type: Apartment

Date Available: 27/11/2023

<https://www.resbymirvac.com>



Plans shown are only indicative of layout. Dimensions are approximate.

Glebe, NSW
411/172 Ross Street