

**Willoughby, NSW**  
103/16 Artarmon Road

**2** BED **2** BATH **1** CAR 

**COMING SOON: Stunning 2 Bedroom Apartment with North Facing Courtyard in NINE by Mirvac, Willoughby**  
Welcome to NINE by Mirvac

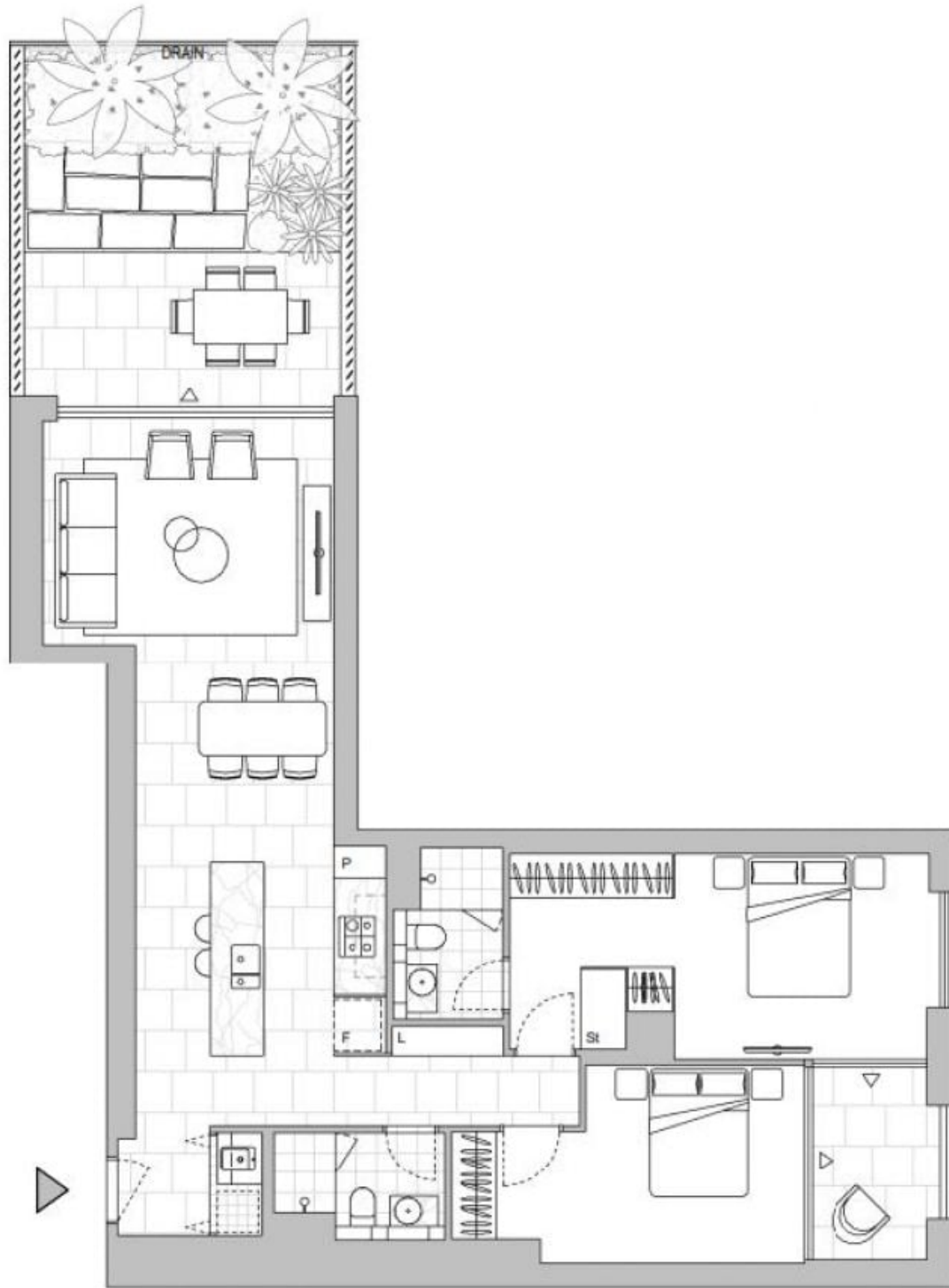
Nestled within the picturesque Lower North Shore, just 6km from Sydney's vibrant CBD and a mere 3.2km from the heart of North Sydney, resides the highly anticipated NINE by Mirvac. Embracing a lifestyle at NINE offers seamless connections, with the convenience of Artarmon Train Station (only 1.7km away), the bustling Chatswood CBD (merely 3.9km away), and easy access to the M1 & M2 road networks. This haven is also surrounded by local boutiques, esteemed schools, verdant parklands, a state-of-the-art leisure centre, and an array of delectable dining options.

**DEPOSIT TAKEN | More available!**

**Contact:** Carmen Whiteley  
02 8588 8888  
0497 555 519  
Christine Howison  
02 8588 8888  
0459 222 085

**Type:** Apartment  
**Date Available:** 15/11/2023  
**<https://www.resbymirvac.com>**

This 115sqm, ground floor apartment features:



Plans shown are only indicative of layout. Dimensions are approximate.

**Willoughby, NSW**  
103/16 Artarmon Road