

Sydney Olympic Park, NSW

21511/2 Figtree Drive

2 BED **2** BATH **1** CAR 

Incredible 2-Bedroom Apartment with City Views + Parking in Sydney Olympic Park

Welcome to Pavilions in Sydney Olympic Park

Located in Sydney Olympic Park, you will find yourself within close proximity to an abundance of parklands, cafes, restaurants & bars, public transport and world-class sporting facilities. As a resident in Pavilions by Mirvac you will enjoy access to a gym, co-working space as well as a children's play area.

This 95sqm, 15th floor apartment features:

- Well-appointed bedrooms with built-in wardrobes
- Spacious living and dining area, great for entertaining

\$850 per week | Deposit Taken

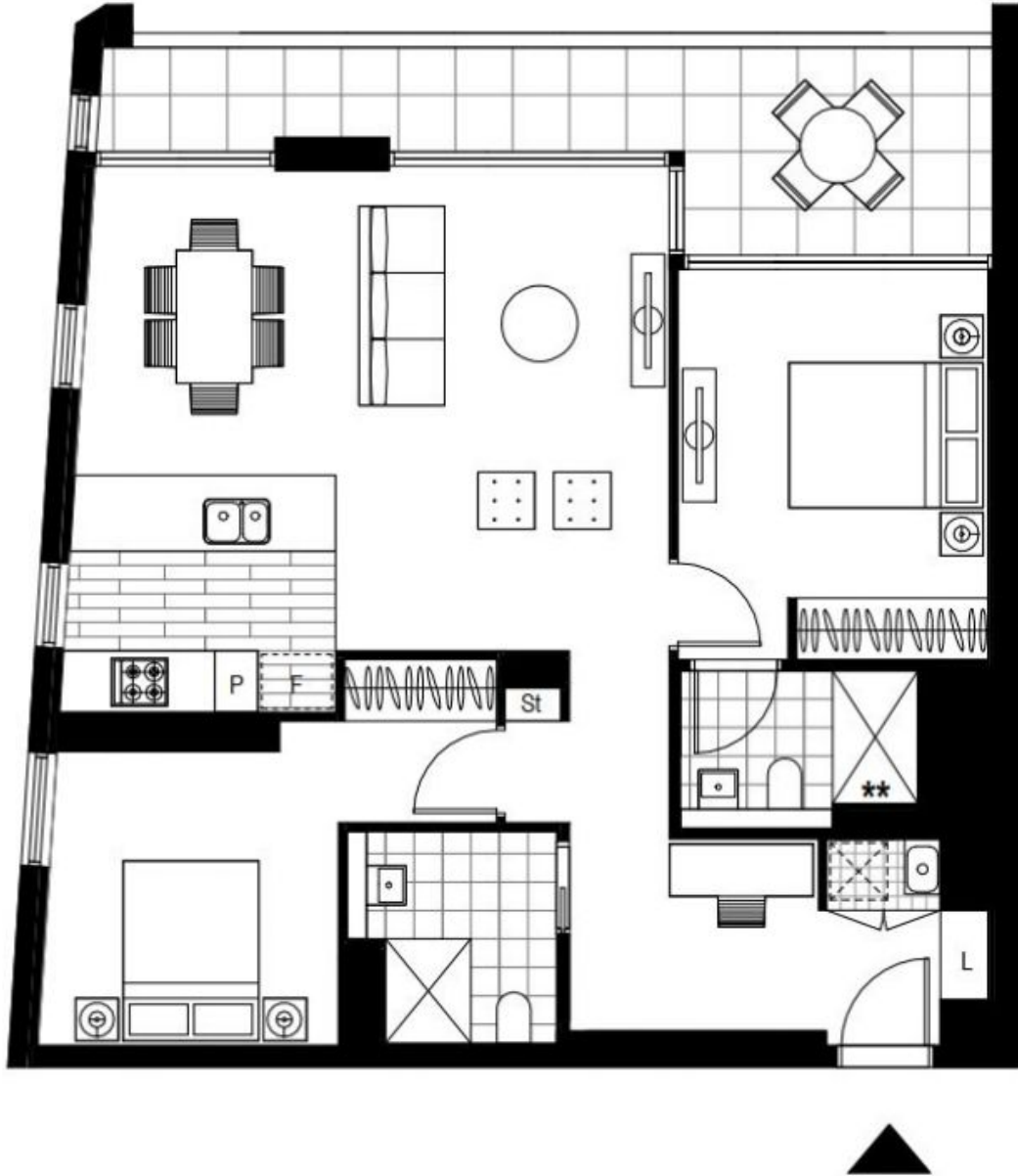
Contact: Real Estate Services by Mirvac
02 8588 8888

Type: Apartment

Date Available: 28/11/2023

Bond: \$3560

<https://www.resbymirvac.com>



Plans shown are only indicative of layout. Dimensions are approximate.

Sydney Olympic Park, NSW
21511/2 Figtree Drive