



Glebe, NSW

117 Ross Street

3 BED **2** BATH **2** CAR 

Rare Park Facing 3 Bedroom Terrace in Harold Park

Welcome to Harold Park, Glebe's Secret Backyard.

Here in Harold Park you will find yourself in an idyllic parkside location, with only a short walk to Glebe Foreshore. Just meters away, The Tramsheds retail precinct resides featuring cafes, a grocery store, restaurants and a medical centre.

This stunning 3 bedroom terrace features:

- 3-Bedroom Terrace with direct park access in Harold Park
- Well-appointed bedrooms with floor-to-ceiling built-in wardrobes
- Master bedroom includes a private balcony and ensuite with bath
- Modern kitchen with stone benchtops and Miele appliances

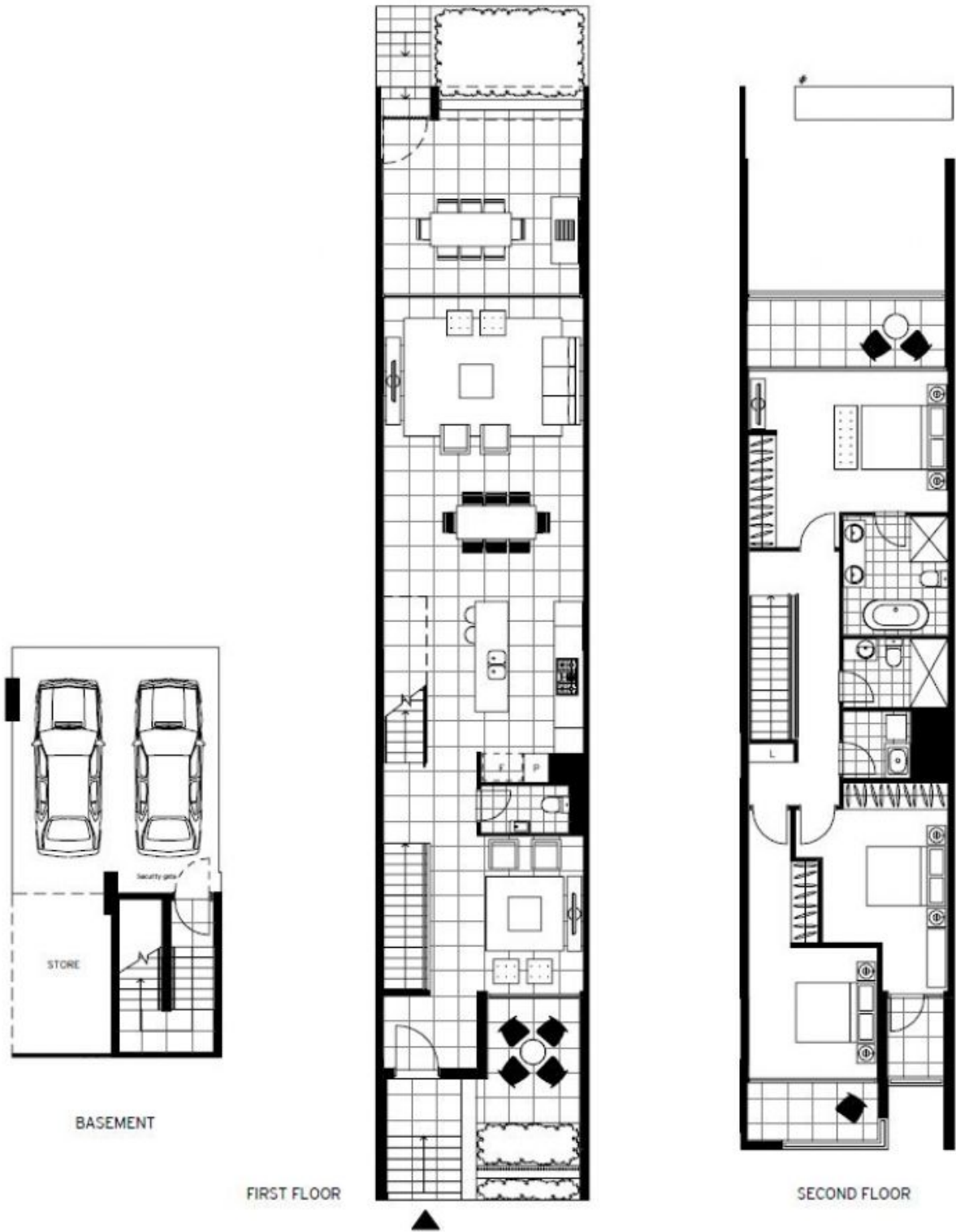
\$1600 per week | Deposit Taken
Park Facing

Contact: Naz Sabzpouri
02 8588 8888
0401 545 440

Type: Terrace

Date Available: 01/09/2023

<https://www.resbymirvac.com>



Plans shown are only indicative of layout. Dimensions are approximate.

Glebe, NSW
117 Ross Street