



Glebe, NSW
6609/162 Ross Street

1 **1** **1** **RES**
BED BATH CAR

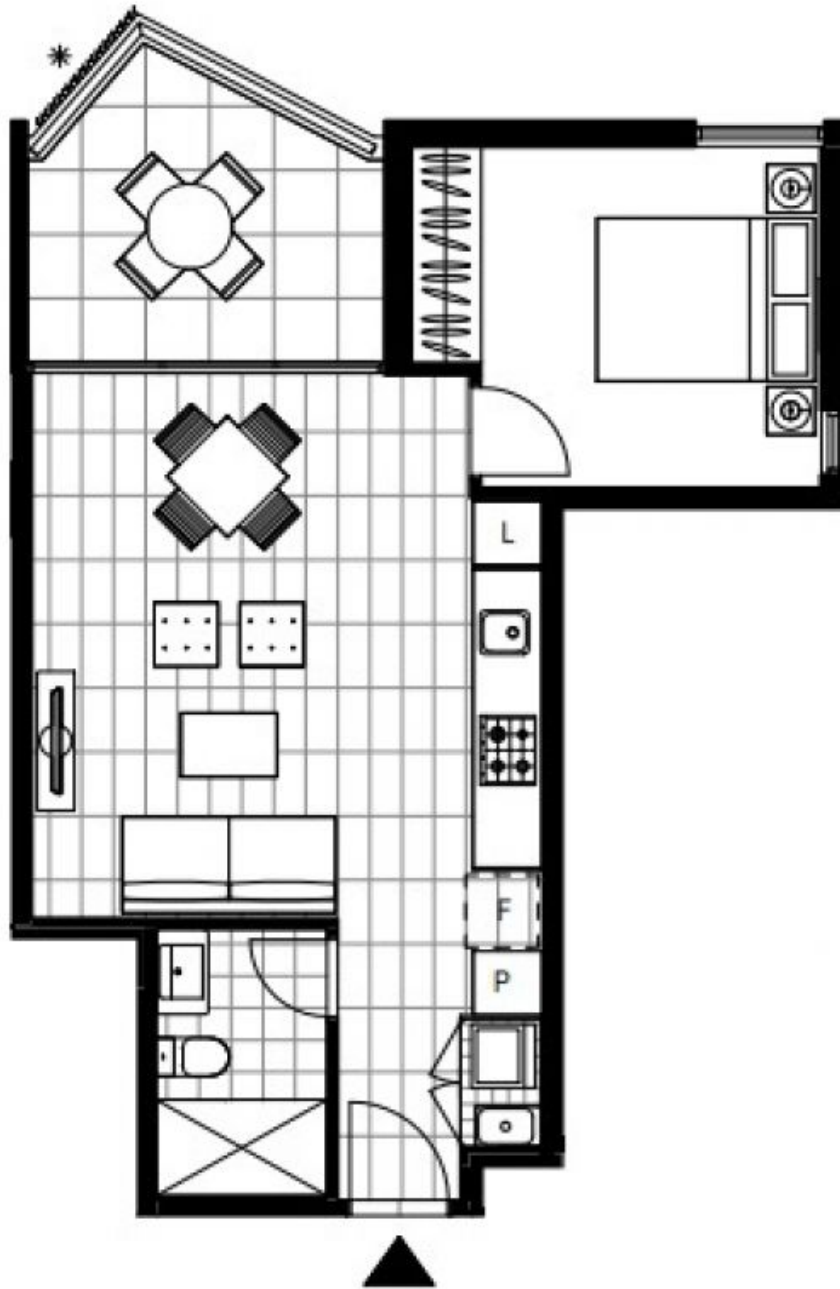
Sold Off Market

Boasting the rare advantage of dedicated parking, this residence is nestled within the vibrant Harold Park community. Built by renowned developer Mirvac in 2017, this exceptional residence exudes a sense of space, quality, and elegance, providing an ideal setting for an active and social lifestyle. Enjoy the tranquility and privacy offered by this apartment, featuring impeccable appointments throughout and a delightful loggia-style balcony that extends your living space.

- ? Open plan gas kitchen, separate living and dining spaces
- ? Stone bench tops, high-end Miele appliances, dishwasher
- ? Bedroom with built-in robe providing ample storage space
- ? Stylish fully tiled bathrooms plus internal laundry facilities
- ? Ducted air conditioning, security entrance with lift access

Sold \$825,000

Council Rates: \$289/qtr (approx)
Strata Rates: \$798/qtr (approx)
Contact: Matthew Matthews
02 8588 8888
0418 266 590
Type: Apartment
Sold Date: 21/07/2023
Land: 52Square Metres
<https://www.resbymirvac.com>



LEVEL 4, 5, 6

Plans shown are only indicative of layout. Dimensions are approximate.

Glebe, NSW
6609/162 Ross Street