



Sydney Olympic Park, NSW

22408/2 Figtree Drive

1
BED

1
BATH



Brand-New, 24th Floor 1 Bedroom Apartment in 'Pavilions', Sydney Olympic Park

Welcome to Pavilions in Sydney Olympic Park

Located in Sydney Olympic Park, you will find yourself within close proximity to an abundance of parklands, cafes, restaurants & bars, public transport and world-class sporting facilities. As a resident in Pavilions by Mirvac you will enjoy access to a gym, co-working space as well as a children's play area.

This 58sqm apartment features:

- Well-appointed bedroom with built-in wardrobe
- Spacious open-plan living and dining area, flowing onto balcony

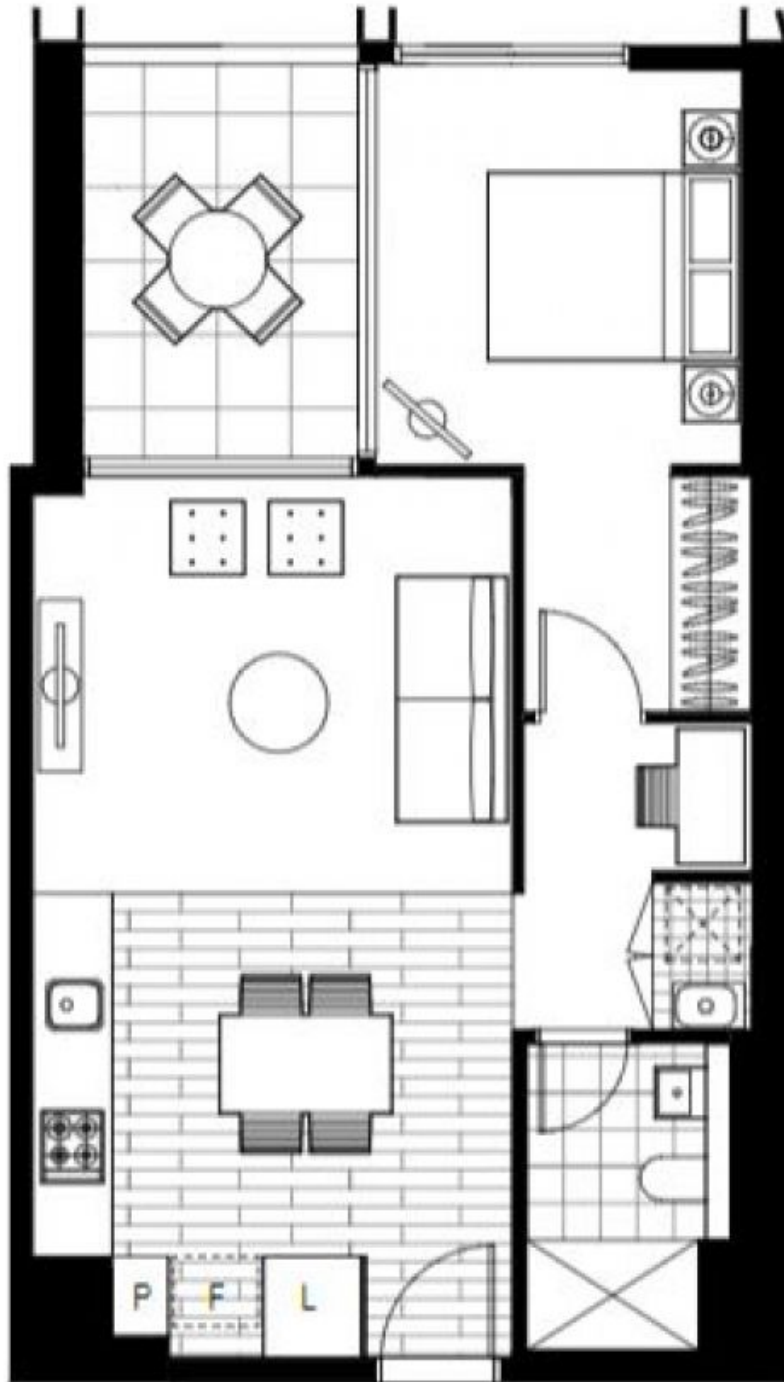
Deposit Taken

Contact: Christine Howison
02 8588 8888
0459 222 085
Georgia Glynn
02 8588 8888
0481 388 777

Type: Apartment

Date Available: 16/12/2022

<https://www.resbymirvac.com>



Plans shown are only indicative of layout. Dimensions are approximate.

Sydney Olympic Park, NSW
22408/2 Figtree Drive